



Office of General Services

DESIGN & CONSTRUCTION GROUP
THE GOVERNOR NELSON A. ROCKEFELLER
EMPIRE STATE PLAZA
ALBANY, NY 12242

ADDENDUM NO. 2 TO PROJECT NO. 47538

CONSTRUCTION WORK PROVIDE ASPHALT PAVING & IMPROVE DRAINAGE HIGHLAND RESIDENTIAL CENTER 629 N CHODIKEE LAKE ROAD HIGHLAND, NEW YORK 12528-0970

October 18, 2024

NOTE: This Addendum forms a part of the Contract Documents. Insert it in the Project Manual. Acknowledge receipt of this Addendum in the space provided on the Bid Form.

CONSTRUCTION WORK

1. SECTION 310000 EARTHWORK: Discard the Section bound in the Project Manual and substitute the attached Section (pages 310000-1 through 310000-14) noted "REVISED 10/15/2024"

DRAWINGS

2. Revised Drawings:
 - a. Drawings No. G-002, C-102, C-110, C-111, C-121, C-140, C-143 AND C-502 noted "REVISED DRAWING 10/15/2024" accompany this Addendum and supersede the same numbered originally issued drawings.
3. Drawing:
 - a. Drawing No. C-101 delete in its entirety.

END OF ADDENDUM

Brady Sherlock, P.E.
Director, Division of Design
Design & Construction

SECTION 310000

EARTHWORK (REVISED 10/15/24)

PART 1 GENERAL

1.01 RELATED WORK SPECIFIED ELSEWHERE

- A. Topsoil: Section 329120.
- B. Seeding: Section 329219.
- C. Rock Removal: Section 312316.

1.02 DEFINITIONS

- A. The following terms have the meanings ascribed to them in this Article, wherever they appear in this Section.
 - 1. Earth Excavation: The removal of all surface and subsurface material not classified as rock as defined below.
 - 2. Rock: Limestone, sandstone, shale, granite, and similar material in solid beds or masses in its original or stratified position which can be removed only by blasting operations, drilling, wedging, or use of pneumatic tools, and boulders with a volume greater than 1.0 cu yd. Concrete building foundations and concrete slabs, not indicated, with a volume greater than 1.0 cu yd shall be classified as rock.
 - a. Limestone, sandstone, shale, granite, and similar material in a broken or weathered condition which can be removed with an excavator or backhoe equipped with a bucket with ripping teeth or any other style bucket shall be classified as earth excavation.
 - b. Masonry building foundations, whether indicated or not, shall be classified as earth excavation.
 - 3. Subgrade Surface: Surface upon which subbase or topsoil is placed.
 - 4. Subbase: Select granular material or subbase course Type 2 which is placed immediately beneath pavement or concrete slabs.
 - 5. Foundation Bearing Grade: Grade/elevation at which the bottom-of-footings are constructed.
 - 6. Maximum Density: The dry unit weight in pounds per cubic foot of the soil at "Optimum Moisture Content" when determined by ASTM D 698 (Standard Proctor).
 - 7. Structures: Buildings, footings, foundations, retaining walls, slabs, tanks, mechanical and electrical appurtenances, or other man-made stationary features constructed above or below the ground surface.
 - 8. Landscaped Areas: Areas not covered by structures, walks, roads, paving, or parking.
 - 9. Unauthorized Excavation: The removal of material below required elevation indicated on the Drawings or beyond lateral dimensions indicated or specified without specific written direction by the Director's Representative.
 - 10. Grading Limit Line (Shown on Drawings): Limits of grading, excavations and filling required for the work of this contract. Unless specifically noted otherwise, the Grading Limit Line and Contract Limit Line will be considered the same.

1.03 SUBMITTALS

- A. Required Soil Testing prior to exporting materials from site:
1. During excavation of soils to be exported from the site, the Contractor is required and responsible for sampling and testing the soils based on sampling frequencies described in 6 NYCRR Part 360.13, Table 5.4 (e)10 "Recommended Number of Soil Samples for Soil Imported or Exported from a Site." The grab samples shall be tested for Volatile Organic Compounds (VOC) in accordance with EPA Method 8260. The composite samples shall be tested for Semi-VOC in accordance with EPA Method 8270, PFAS in accordance with EPA Method 1633, Pesticides in accordance with EPA Method 8081, PCB'S in accordance with EPA Method 8082 and Hexavalent Chromium, Cyanide and Metals. All testing shall be performed by a New York State Department of Health (NYSDOH) Environmental Laboratory Approval Program (ELAP) Approved Laboratory. The results must be submitted to the Director's Representative prior to being allowed to export any soil material from the site.
- B. Product Data:
1. Filter Fabric: Manufacturer's catalog sheets, specifications, and installation instructions.
 2. Geogrid: Manufacturer's catalog sheets, specifications, and installation instructions.
- C. Samples: Submit samples as follows. Take the samples in the presence of the Director's Representative, and submit to the Director's Representative the laboratory test results for gradation, proctors and soundness tests, when required. These tests will be performed in accordance with ASTM standards, will be performed and signed by a certified soils laboratory, and will be submitted as part of the original submittal. At a minimum the samples taken will be of the following quantities:
1. Select Granular Material: 50 - 60 lb. (Two Samples).
 2. Subbase Course Type 2: 50 - 60 lb. (Two Samples).
 3. Subbase Course Type 3: 50-60 lb (Two Samples)
 4. Selected Fill: 40 - 50 lb.
 5. Cushion Material: 30 lb.
 6. Crushed Stone (Each Type): 30 lb.
 8. Underdrain Filter Material: 40 - 50 lb.
- D. Quality Control Submittals:
1. Subbase Materials: Name and location of source and the DOT Source Number. If the material is not being taken from an approved DOT Source the results of the gradation and soundness tests performed by an ASTM certified soils laboratory will be required.
 2. Other Aggregates: Name and location of source and soil laboratory test results.

1.04 DELIVERY, STORAGE, AND HANDLING

- A. Protect filter fabric from sunlight during transportation and storage.

1.05 PROJECT CONDITIONS

- A. Protect existing trees and plants during performance of the Work unless otherwise indicated. Box trees and plants indicated to remain within the grading limit line with temporary steel fencing or solidly constructed wood barricades as required. Protect root systems from smothering. Do not store excavated material, or allow vehicular traffic or parking within the branch drip line. Restrict foot traffic to prevent excessive compaction of soil over root systems.
- B. Cold Weather Requirements:
 - 1. Excavation: When freezing temperatures are anticipated, do not excavate to final required elevations for concrete work unless concrete can be placed immediately.
 - 2. Backfilling: If backfill is being placed during freezing temperatures the backfilling operations will be monitored by the Director's Representative and the following procedures will be followed:
 - a. Frozen ground will be removed in its entirety from beneath and five feet beyond the area of fill placement.
 - b. The fill material placed will consist of Selected Fill and will be free of all frozen chunks that exceed four inches in size. The material transported to the project site will only consist of material excavated from below the frost depth.
 - c. At the end of the work day, the area of fill placement will be covered with insulated blankets, or left unprotected. Other means of protection (hay, wood chips, etc.) may also be used for protection provided it is approved by the Director's Representative.
 - d. Following work day - Remove the insulated blankets and/or strip the area of all frozen material as specified previously.
 - e. Upon establishing the subgrade elevations, protect the grades with insulated blankets or place additional material that will adequately insulate the exposed earth surface from frost. This additional fill or protective material will be stripped just prior to pouring concrete.
- C. Thru-traffic or fill placement with heavy construction vehicles or equipment which causes rutting or weaving to occur within the perimeter of a building will not be permitted. If rutting or weaving occurs during placement of fill, place specified fill in a stable area outside building perimeter and spread with tracked equipment to specified layer thickness.

PART 2 PRODUCTS

2.01 MATERIALS

- A. Select Granular Material: Stockpiled, sound, durable, sand, gravel, stone, or blends of these materials, free from organic and other deleterious materials. Comply with the gradation and material requirements specified below:

Sieve		Percent Passing
Sieve Size	Size opening (mm)	
2 inch	50.8	100
1/4 inch	6.35	30-65
No. 40	0.425	5-40
No. 200	0.075	0-10

1. Magnesium Sulfate Soundness Test: 20 percent maximum loss by weight after four test cycles.
2. Plasticity Index: The plasticity index of the material passing the No. 40 mesh sieve will not exceed 5.0.
3. Elongated Particles: Not more than 30 percent, by weight, of the particles retained on a 1/2 inch sieve will consist of flat or elongated particles. A flat or elongated particle is defined as one which has its greatest dimension more than three times its least dimension.

B. Subbase Course Type 2: Stockpiled, crushed ledge rock or approved blast furnace slag. Comply with the gradation and material requirements specified below:

Sieve		Percent Passing
Sieve Size	Size opening (mm)	
2 inch	50.8	100
1/4 inch	6.35	25-60
No. 40	0.425	5-40
No. 200	0.075	0-10

1. Magnesium Sulfate Soundness Test: 20 percent maximum loss by weight after four test cycles.
2. Plasticity Index: The plasticity index of the material passing the No. 40 mesh sieve will not exceed 5.0.
3. Elongated Particles: Not more than 30 percent, by weight, of the particles retained on a 1/2 inch sieve will consist of flat or elongated particles. A flat or elongated particle is defined as one which has its greatest dimension more than three times its least dimension.

C. Subbase Course Type 3: Stone, Sand, Gravel and/or recycled concrete material (RCA). Comply with the gradation and material requirements specified below:

Sieve		Percent Passing
Sieve Size	Size opening (mm)	
2 inch	50.8	100
1/4 inch	6.35	30-75
No. 40	0.425	5-40
No. 200	0.075	0-10

1. Magnesium Sulfate Soundness Test: 30 percent maximum loss by weight after four test cycles.
2. Plasticity Index: The plasticity index of the material passing the No. 40 mesh sieve will not exceed 5.0.

3. Elongated Particles: Not more than 30 percent, by weight, of the particles retained on a 1/4-inch sieve will consist of flat or elongated particles. A flat or elongated particle is defined as one which has its greatest dimension more than three times its least dimension.

- D. Selected Fill: Sound, durable, sand, gravel, stone, or blends of these materials, free from organic and other deleterious materials. Comply with the gradation requirements specified below:

Sieve		Percent Passing
Sieve Size	Size opening (mm)	
4 inch	101.6	100
No. 40	0.425	0-70
No. 200	0.075	0-15

- E. Suitable Material (Fill and Backfill for Landscaped Areas): Material consisting of mineral soil (inorganic), blasted or broken rock and similar materials of natural or man-made origin, including mixtures thereof. Maximum particle size will not exceed 2/3 of the specified layer thickness prior to compaction. NOTE: Material containing cinders, industrial waste, sludge, building rubble, land fill, muck, and peat will be considered unsuitable for fill and backfill, except topsoil and organic silt may be used as suitable material in landscaped areas provided it is placed in the top layer of the subgrade surface.

- F. Cushion Material: Will consist of clean, hard, durable, uncoated particles, free from lumps of clay and all deleterious substances and will meet the following gradation requirements:

Sieve Size		Percent Passing
Sieve Size	Size opening (mm)	
1/4 inch	6.35	100
No. 50	0.25	0-35
No. 100	0.15	0-10

- G. No. 1 Coarse Aggregate: Crushed Stone that complies with material requirements of DOT Article 703-02 and meets the following gradation.

Sieve		Percent Passing
Sieve Size	Size opening (mm)	
1 inch	25.4	100
1/2 inch	12.7	90-100
1/4 inch	6.35	0-15

- H. No. 2 Coarse Aggregate: Crushed Stone that complies with material requirements of DOT Article 703-02 and meets the following gradation.

Sieve		Percent Passing
Sieve Size	Size opening (mm)	
1-1/2 inch	38.1	100
1 inch	25.4	90-100
1/2 inch	12.7	0-15

- I. Rip Rap: Light Stone Filling that complies with DOT Article 620-2.02 for stone filling.

2.02 GEOTECHNICAL FABRICS

- A. Filter Fabric (GeoTextile):
 1. Drainage and Erosion Control: Amoco 1199 & 2019, Maccaferri MacTex MX140 & MX155, Mirafi 140N & 160N, Fiberweave 403 & 404 or equivalent.
 2. Separation for foundation drains, underdrains, undercuts: Amoco 2002 & 2004, Contech Construction Products Inc. C-180, Synthetic Industries Geotex 250ST & 315ST, Mirafi Geolon HP570 & HP1500 or equivalent.
 3. Separation/Stabilization beneath pavements: GeoTex 801, Bonded Fibers Products PN080, Maccaferri Gabions MacTex MX275 & 340, Mirafi 160N & 180N or equivalent.
 4. Biaxial Geogrid Tensar BX1200, Tencate BG 120 or equivalent.

PART 3 EXECUTION

3.01 CLEARING AND GRUBBING

- A. Clear and grub the Site within the Grading Limit Line (GLL) of trees, shrubs, brush, other prominent vegetation, debris, and obstructions except for those items indicated to remain. Completely remove stumps and roots protruding through the ground surface.
 1. Use only hand methods for grubbing inside the drip line of trees indicated to be left standing.
 2. Where roots and branches of trees indicated to be saved interfere with new construction, carefully and cleanly cut them back to point of branching.
- B. Fill depressions caused by the clearing and grubbing operations in accordance with the requirements for filling and backfilling, unless further excavation is indicated.

3.02 REMOVAL OF TOPSOIL

- A. Remove existing topsoil from areas within the Grading Limit Line where excavation or fill is required.
- B. Stockpile approved topsoil where directed until required for use. Place, grade, and shape stockpiles for proper drainage.
 1. Topsoil will be tested prior to stockpiling. Stockpile only quantities of topsoil approved in writing for re-use.

3.03 UNDERGROUND UTILITIES

- A. Locate existing underground utilities prior to commencing excavation work. Determine exact utility locations by hand excavated test pits. Support and protect utilities to remain in place.
- B. Do not interrupt existing utilities that are in service.

3.04 EXCAVATION

- A. Excavate earth as required for the Work.
- B. Install and maintain all erosion and sedimentation controls during all earthwork operations as specified on the Contract Drawings or as directed by local officials. If the erosion and sedimentation controls specified by the local officials are more stringent than those specified on the Contract Drawings contact the Director's Representative.
- C. Maintain sides and slopes of excavations in a safe condition until completion of backfilling. Comply with Code of Federal Regulations Title 29 - Labor, Part 1926 (OSHA).
 - 1. Trenches: Deposit excavated material on one side of trench only. Trim banks of excavated material to prevent cave-ins and prevent material from falling or sliding into trench. Keep a clear footway between excavated material and trench edge. Maintain areas to allow free drainage of surface water.
- D. Stockpile excavated materials classified as suitable material where directed, until required for fill. Place, grade, and shape stockpiles for proper drainage as approved by the Director's Representative.
- E. Excavation for Structures: Conform to elevations, lines, and limits indicated. Excavate to a vertical tolerance of plus or minus 1 inch. Extend excavation a sufficient lateral distance to provide clearance to execute the Work.
- F. Slabs and Floors: Excavate to the following depths below bottom of concrete for addition of select granular material:
 - 1. Exterior Slabs and Steps: 12 inches unless otherwise indicated.
- G. Pipe Trenches: Open only enough trench length to facilitate laying pipe sections. Unless otherwise indicated on the Drawings, excavate trenches approximately 24 inches wide plus the outside pipe diameter, equally divided on each side of pipe centerline. Cut trenches to cross section, elevation, profile, line, and grade indicated. Accurately grade and shape trench bottom for uniform bearing of pipe in undisturbed earth. Excavate at bell and coupling joints to allow ample room for proper pipe connections.
 - 1. Trench in Rock: Excavate an additional 6 inches below bottom of pipe for bed of cushion material under the piping.
- H. Open Ditches: Cut ditches to cross sections and grades indicated.

- I. Pavement: Excavate to subgrade surface elevation.
- J. Unauthorized Excavations: Unless otherwise directed, backfill unauthorized excavation under footings, foundation bases, and retaining walls with compacted select granular material without altering the required footing elevation. Elsewhere, backfill and compact unauthorized excavation as specified for authorized excavation of the same classification, unless otherwise directed by the Director.
 - 1. Unauthorized excavations under structural Work such as footings, foundation bases, and retaining walls will be reported immediately to the Director before any concrete or backfilling Work commences.
- K. Notify the Director's Representative upon completion of excavation operations. Do not proceed with the Work until the excavation is inspected and approved. Inspection of the excavation by the Director's Representative will be made on three working days notice.

3.05 DEWATERING

- A. Prior to the performance of any excavations provide dewatering methods such that the groundwater table is maintained at an elevation that is beneath the excavated depth.
- B. Prevent surface and subsurface water from flowing into excavations and trenches and from flooding the site and surrounding area.
- C. Do not allow water to accumulate in excavations or trenches. Remove water from all excavations immediately to prevent softening of foundation bottoms, undercutting footings, and soil changes detrimental to the stability of subgrades and foundations. Furnish and maintain pumps, sumps, suction and discharge piping systems, and other system components necessary to convey the water away from the Site.
- D. Convey water removed from excavations, and rain water, to collecting or run-off area. Cut and maintain temporary drainage ditches and provide other necessary diversions outside excavation limits for each structure. Do not use trench excavations as temporary drainage ditches.
- E. Provide temporary controls to restrict the velocity of discharged water as necessary to prevent erosion and siltation of receiving areas.

3.06 SETTLEMENT DETECTION

- A. Excavating beneath the bearing grades of an existing structure: Establish a settlement detection method approved by the Director's Representative for structures subject to settlement from excavation, sheeting or sheet piling operations. Maintain surveillance to detect any settlement.
- B. Surcharging: Establish a settlement monitoring plan to accurately determine the settlements that have occurred and the rate that they occurred to adequately determine when settlement caused by surcharge is complete.

3.07 PLACING FILTER FABRIC

- A. Place and overlap filter fabric in accordance with the manufacturer's installation instructions, unless otherwise shown.
- B. Cover tears and other damaged areas with additional filter fabric layer extending three feet beyond the damage.
- C. Do not permit traffic or construction equipment directly on filter fabric.
- D. Backfill over filter fabric within two weeks after placement. Backfill in accordance with the fabric manufacturer's instructions and in a manner to prevent damage to the fabric.

3.08 PLACING FILL AND BACKFILL

- A. Surface Preparation of Fill Areas: Strip topsoil, remaining vegetation, and other deleterious materials prior to placement of fill. Remove all asphalt pavement in its entirety from areas requiring the placement of fill or break up old pavements to a maximum size of four inches. Prior to placement of fill, smooth out and compact areas where wheel rutting has occurred due to stripping or earthwork operations.
- B. Excavations: Backfill as promptly as Work permits, but not until completion of the following:
 - 1. Acceptance by the Director's Representative of construction below finish grade including, where applicable, dampproofing, waterproofing, perimeter insulation, and bearing capacity of supporting soil.
 - 2. Inspection, testing, approval, and recording locations of underground utilities.
 - 3. Removal of concrete formwork.
 - 4. Removal of temporary sheeting or sheetpiling and backfilling of voids caused by removals.
 - 5. Cutting off top of permanent sheeting or sheetpiling.
 - 6. Removal of trash and debris.
 - 7. Installation of permanent or temporary bracing on horizontally supported walls.
- C. Place backfill and fill materials in layers not more than eight inches thick in loose depth unless otherwise specified. Before compaction, moisten or aerate each layer as necessary to facilitate compaction to the required density. Do not place backfill or fill material on surfaces that are muddy, frozen, or covered with ice.
 - 1. Place fill and backfill against foundation walls, and in confined areas such as trenches not easily accessible by larger compaction equipment, in maximum six inch thick loose depth layers.
 - 2. For large fill areas, the layer thickness may be modified by the Director's Representative, at the Contractor's written request, if in the Director's Representative's judgment, the equipment used is capable of compacting the fill material in a greater layer thickness. This request will include the type and specifications of compaction equipment intended for use.

3. For Open Graded Stone/Clean Stone (Item B-12, No. 1 crushed stone, No. 2 crushed stone, etc.) in access of six inches: Material must be wrapped in separation fabric.
- D. Concrete walls:
1. Do not place fill or backfill against concrete walls until the walls have attained 70 percent of their design strength. Place backfill against walls of structures containing basements or crawl spaces only after the first floor structural members are in place and any concrete components of the first floor structural system have attained 70 percent of their concrete design strength.
 2. Prevent wedging action of backfill against structures backfilled on both sides, by placing backfill uniformly around structure so that the elevation on each side never differs by more than 24 inches.
- E. Foundation Drains:
1. Line pipe trench loosely with filter fabric. Lap successive sheets 18 inches.
 2. Place underdrain filter material a minimum of 4 inches deep under pipe and 6 inches on both sides and over top of drain pipe.
 3. Completely wrap underdrain filter material with filter fabric.
 4. Within two weeks complete balance of backfill with selected fill extending 2 feet out from foundation wall and up to 6 inches below finished grade.
- F. Perimeter Insulation: Before the insulation is installed, place and tamp specified backfill to a smooth plane even with the required elevation of the lower surface of the insulation.
- G. Under Exterior Concrete Slabs and Steps:
1. Up to Subgrade Surface Elevation: Place selected fill when fill or backfill is required.
 2. Subbase Material: Place 12 inches of select granular material over subgrade surface.
- H. Under Interior Concrete Slabs:
1. Up to Subgrade Surface Elevation: Place selected fill when fill or backfill is required.
 2. Subbase Material: Place six inches of select granular material over subgrade surface.
- I. Under Pavements and Walks:
1. Up to Subgrade Surface Elevation: Place selected fill when fill or backfill is required.
 2. Subbase Material: Place as indicated.
- J. Landscaped Areas: Place suitable material when required to complete fill or backfill areas up to subgrade surface elevation. Do not use material containing rocks over four inches in diameter within the top 12 inches of suitable material.

- K. Plastic Pipe in Trenches: Place cushion material a minimum of six inches deep under pipe, 12 inches on both sides, and 12 inches above top of pipe. Complete balance of backfill as specified.
 - 1. Trench in Rock: Place a minimum six inch deep bed of cushion material under pipe.
- L. Backfilling Excavation Resulting From Removal of Unsuitable Material Beneath Structures and Other Improvements: Backfill the excavation with compacted select granular material.
 - 1. Such additional backfilling, exceeding the numeric quantities indicated on the Drawings, is included in the unit prices specified in this Section.

3.09 ADDITIONAL REQUIREMENTS FOR PLACING FILL TO SUPPORT STRUCTURES

- A. Place fill within the entire area enclosed by a line ten feet outside the perimeter of the structure to be constructed as follows:
 - 1. Strip the area in accordance with the requirements for Surface Preparation of Fill Areas.
 - 2. Compact the stripped surface to 95 percent of maximum density.
 - 3. Place fill in horizontal layers not exceeding eight inches loose depth and compact layers as specified.

3.10 COMPACTION

- A. All materials with exception of open graded stone (No. 2 Coarse aggregate, No. 1 Coarse aggregate, Item B-12, etc.):
 - 1. Compact each layer of fill and backfill for the following area classifications to the percentage of maximum density specified below and at a moisture content suitable to obtain the required densities, but at not less than three percent drier or more than two percent wetter than the optimum content as determined by ASTM D 698 (Standard Proctor) or 1557 (Modified Proctor).
 - a. Concrete Slabs and Steps: 95 percent.
 - b. Landscaped Areas: 90 percent.
 - c. Pavements and Walks: 95 percent.
 - d. Pipe Bedding: 95 percent.
 - 2. When the existing ground surface to be compacted has a density less than that specified for the particular area classification, break up and pulverize, and moisture condition to facilitate compaction to the required percentage of maximum density.
 - 3. Moisture Control:
 - a. Where fill or backfill must be moisture conditioned before compaction, uniformly apply water to the surface and to each layer of fill or backfill. Prevent ponding or other free water on surface subsequent to, and during compaction operations.
 - b. Remove and replace, or scarify and air dry, soil that is too wet to permit compaction to specified density. Soil that has been removed because it is too wet to permit compaction may be stockpiled or spread and allowed to dry. Assist drying by discing, harrowing or pulverizing, until moisture content is reduced to a value which will permit compaction to the percentage of maximum density specified.

4. If a compacted layer fails to meet the specified percentage of maximum density, the layer will be recompact and retested. If compaction cannot be achieved the material/layer will be removed and replaced. No additional material may be placed over a compacted layer until the specified density is achieved.
- B. Open graded Stone: Place material in maximum twelve inch lifts. Each lift shall be raked smooth and compacted through several passes of a walk behind vibratory roller. Compaction Testing is **not** required.

3.11 ROUGH GRADING

- A. Exterior Grading: Trim and grade area within the Grading Limit Line and excavations outside the limit line, required by this Contract, to a level of 4 inches below the finish grades indicated unless otherwise specified herein or where greater depths are indicated. Provide smooth uniform transition to adjacent areas.
 1. Slope cut and fill in transition areas, outside of the grading limit line, to meet corresponding levels of existing grades at a slope of 1 vertical to 2 horizontal unless otherwise indicated.
 2. Landscaped Areas: Provide uniform subgrade surface within 1 inch of required level to receive topsoil thickness specified. Compact fill as specified to within three inches of subgrade surface. Remove objectionable material detrimental to proper compaction or to placing full depth of topsoil. If the top three inches of subgrade has become compacted before placement of topsoil, harrow or otherwise loosen rough graded surface to receive topsoil to a depth of three inches immediately prior to placing topsoil.

3.12 SUBGRADE SURFACE FOR WALKS AND PAVEMENT

- A. Shape and grade subgrade surface as follows:
 1. Walks: Shape the surface of areas under walks to required line, grade and cross section, with the finish surface not more than 1 inch above or below the required subgrade surface elevation.
 2. Pavements: Shape the surface of areas under pavement to required line, grade and cross section, with the finish surface not more than 1/2 inch above or below the required subgrade surface elevation.
- B. Grade Control: During construction, maintain lines and grades including crown and cross-slope of subbase course.
- C. Thoroughly compact subgrade surface for walks and pavement by mechanical rolling, tamping, or with vibratory equipment as approved to the density specified.
- D. Shoulders: Place shoulders along edges of filled subgrades to prevent lateral movement. Construct shoulders of selected fill material, placed in such quantity to compact to thickness of each subgrade course layer. Compact and roll at least a 2'-0" wide additional layer of each subgrade course.

3.13 FINISH GRADING

- A. Uniformly grade rough graded areas within limits of the Grading Limit Line to finish grade elevations indicated.
- B. Grade and compact to smooth finished surface within tolerances specified, and to uniform levels or slopes between points where finish elevations are indicated or between such points and existing finished grade.
- C. Grade areas adjacent to building lines so as to drain away from structures and to prevent ponding.
- D. Finish surfaces free from irregular surface changes, and as follows:
 - 1. Grassed Areas: Finish areas to receive topsoil to within one inch above or below the required subgrade surface elevations.
 - 2. Walks: Place and compact subbase material as specified. Shape surface of areas under walks to required line, grade and cross section, with the finish surface not more than 1/2 inch above or below the required subbase elevation.
 - 3. Pavements: Place and compact subbase material as specified. Shape surface of areas under pavement to required line, grade and cross section, with the finish surface not more than 1/2 inch above or below the required subbase elevation.
 - 4. Building Slabs: Grade subbase material smooth and even, free of voids, compacted as specified, and to required subbase elevation. Finish final grades within a tolerance of 1/4 inch when tested with a ten foot straightedge.
 - 5. Surfaces To Receive Vapor Barrier: Provide smooth surfaces graded, tamped and/or rolled, entirely free of obstructions or protruding objects.
- E. Spread topsoil directly upon prepared subgrade surface to a depth measuring FOUR inches after natural settlement of the topsoil has occurred in areas to be seeded or to receive sod. Place to greater depth when necessary to adjust grades to required elevations.
 - 1. Approved existing topsoil within the Grading Limit Line may be used. Provide additional topsoil from outside sources as required.
- F. Finish topsoil surface free of depressions which will trap water, free of stones over 1 inch in any dimension, and free of debris.

3.14 MAINTENANCE AND RESTORATION

- A. Restore grades to indicated levels where settlement or damage due to performance of the Work has occurred. Correct conditions contributing to settlement. Remove and replace improperly placed or poorly compacted fill materials.
- B. Restore pavements, walks, curbs, lawns, and other exterior surfaces damaged during performance of the Work to match the appearance and performance of existing corresponding surfaces as closely as practicable.

- C. Topsoil and seed or sod damaged lawn areas outside the GLL and new lawn areas inside the GLL. Water as required until physical completion of the Work.

3.15 DISPOSAL OF EXCESS AND UNSUITABLE MATERIALS

- A. Remove from State property and dispose of excess and unsuitable materials, including materials resulting from clearing and grubbing and removal of existing improvements.

3.16 FIELD QUALITY CONTROL

- A. Compaction Testing: Notify the Director's Representative at least three working days in advance of all phases of filling and backfilling operations. Compaction testing will be performed by the Director's Representative to ascertain the compacted density of the fill and backfill materials. Compaction testing will be performed on certain layers of the fill and backfill as determined by the Director's Representative. If a compacted layer fails to meet the specified percentage of maximum density, the layer will be recompacted and will be retested. No additional material may be placed over a compacted layer until the specified density is achieved.

3.17 PROTECTION

- A. Protect graded areas from traffic and erosion, and keep them free of trash and debris.

END OF SECTION

GENERAL NOTES:

- BASEMAPPING BASED ON A FIELD SURVEY BY PATRIOT DESIGN & CONSULTING ON NOVEMBER 30, 2022. AN AERIAL DRONE SURVEY COMPLETED BY THE ENVIRONMENTAL DESIGN PARTNERSHIP, LLP IN 2023 AND BASEMAPPING DERIVED FROM THE 2006 OGS PROJECT NO.42968 "REPAIR WATER AND SEWER SYSTEMS" PREPARED BY C.T. MALE ASSOCIATES, P.C.
- EXTEND THE CONTRACT LIMIT LINE (CLL) AS REQUIRED AND DIRECTED TO PROVIDE FOR ALL WORK REQUIRED.
- UNDERGROUND UTILITIES ARE SHOWN FROM FIELD LOCATION WHERE POSSIBLE AND FROM RECORD DATA WHERE FOUND. EXACT LOCATION OF UTILITIES MAY DIFFER FROM THE LOCATION SHOWN, AND ADDITIONAL UTILITIES MAY EXIST. VERIFY THE PRESENCE OF AND EXACT LOCATION OF ALL UTILITIES WITHIN THE CLL PRIOR TO COMMENCING ANY EXCAVATION WORK PURSUANT TO THIS CONTRACT. SEE SPECIFICATION SECTION 023313.
- PROVIDE ALL REMOVALS INCIDENTAL TO AND NECESSARY TO PROVIDE THE WORK OF THIS CONTRACT. REMOVE EXISTING FEATURES IN THEIR ENTIRETY UNLESS OTHERWISE NOTED.
- CLEAR AND GRUB EXISTING VEGETATION, REGARDLESS OF SIZE, NECESSARY TO INSTALL THE WORK OF THIS CONTRACT. REMOVE ALL ABOVEGROUND PORTIONS OF PLANTS. GRUB ALL BELOW GROUND PORTIONS OF PLANTS TO A MINIMUM DEPTH OF 6" BELOW FINISH GRADE IN LAWN AREAS. COMPLETELY REMOVE ALL BELOW GROUND PORTIONS OF PLANTS IN AREAS TO BE COVERED WITH BUILDINGS AND OTHER STRUCTURES, PAVEMENTS, AND PLANTING BEDS. ALL INDIVIDUAL TREES INDICATED FOR REMOVAL ARE TO BE REMOVED IN THEIR ENTIRETY, INCLUDING ALL ABOVE AND BELOW GROUND PORTIONS. PRESERVE AND PROTECT ALL EXISTING VEGETATION NOT INDICATED TO BE REMOVED, AND OTHER VEGETATION OUTSIDE THE CLL NOT REQUIRED TO BE DISTURBED BY THE WORK OF THIS, AND RELATED CONTRACTS. PROVIDE FENCES, BARRICADES AND OTHER SUITABLE DEVICES TO PREVENT DAMAGE BY VEHICLES. DO NOT DRIVE OR PARK VEHICLES ON LAWNS.
- PROTECT EXISTING PHYSICAL FEATURES FROM DAMAGE NOT INDICATED OR REQUIRED FOR THE WORK. PROTECT EXISTING PHYSICAL FEATURES FROM DAMAGE ON THE SITE THAT LIE OUTSIDE THE CLL ADJACENT TO THE PROJECT.
- RESTORE TO THEIR ORIGINAL CONDITION ALL EXISTING PHYSICAL FEATURES DAMAGED BY THE UNAUTHORIZED ACT OR OMISSION OF THE CONTRACTOR. ORIGINAL CONDITION SHALL MEAN THE CONDITION IN WHICH THE FEATURE WAS FOUND AT THE START OF THE WORK.
- COORDINATE THE LAYOUT WORK WITH THE DIRECTOR'S REPRESENTATIVE. ELIMINATE ALL CONFLICTS IN UTILITY LOCATIONS PRIOR TO ANY EXCAVATIONS, EXCEPT FOR APPROVED CHANGES MADE TO AVOID CONFLICT. DO NOT DEVIATE FROM THE LOCATIONS SHOWN ON THE PLANS WITHOUT PRIOR WRITTEN APPROVAL OF THE DIRECTOR'S REPRESENTATIVE.
- PROVIDE SMOOTH TRANSITION TO ALL EXISTING GRADES.
- STRIP ALL EXISTING ORGANIC SOIL FROM ALL AREAS WITHIN THE CLL WHERE EXCAVATION OR FILL IS REQUIRED. UNCONTAMINATED ORGANIC SOILS FROM LAWN AND LANDSCAPED AREAS WILL BE ACCEPTABLE FOR RE-USE AS TOPSOIL. STOCKPILE ALL STRIPPED ORGANIC SOIL AS DIRECTED BY DIRECTOR'S REPRESENTATIVE. DO NOT STOCKPILE NON-ORGANIC MINERAL SOIL OR OTHER CONTAMINATED MATERIALS WITH TOPSOIL.
- FINE GRADE, TOPSOIL SEED AND MULCH ALL AREAS DISTURBED BY THE WORK OF THIS CONTRACT AND NOT SPECIFIED TO BE COVERED BY BUILDINGS, PAVEMENTS OR OTHER FINISHED SURFACES. RESTORE ALL EXISTING CONSTRUCTION TO ORIGINAL CONDITION, UNLESS SHOWN OR OTHERWISE DIRECTED.
- ALL REMOVED ASPHALT, CONCRETE AND SOILS, OTHER THAN ORGANIC TOPSOIL, MUST BE REMOVED FROM SITE AND DISPOSED OF IN A LEGAL MANNER OFF-SITE.
- DURING EXCAVATION OF SOILS TO BE EXPORTED FROM THE SITE, THE CONTRACTOR IS REQUIRED AND RESPONSIBLE FOR SAMPLING AND TESTING THE SOILS BASED ON SAMPLING FREQUENCIES DESCRIBED IN 6 NYCRR PART 360.13, TABLE 5.4 (e)10 "RECOMMENDED NUMBER OF SOIL SAMPLES FOR SOIL IMPORTED TO OR EXPORTED FROM A SITE". THE GRAB SAMPLES SHALL BE TESTED FOR VOLATILE ORGANIC COMPOUNDS (VOC) IN ACCORDANCE WITH EPA METHOD 8260. THE COMPOSITE SAMPLES SHALL BE TESTED FOR SEMI-VOC IN ACCORDANCE WITH EPA METHOD 8270, PFAS IN ACCORDANCE WITH EPA METHOD 1633, PESTICIDES IN ACCORDANCE WITH EPA METHOD 8081, PCB'S IN ACCORDANCE WITH EPA METHOD 8082 AND HEXAVALENT CHROMIUM, CYANIDE AND METALS. TESTING SHALL BE PERFORMED BY A NEW YORK STATE DEPARTMENT OF HEALTH (NYSDOH) ENVIRONMENTAL LABORATORY APPROVAL PROGRAM (ELAP) APPROVED LABORATORY. THE RESULTS MUST BE SUBMITTED TO THE DIRECTOR'S REPRESENTATIVE PRIOR TO BEING ALLOWED TO EXPORT ANY SOIL MATERIAL FROM THE SITE.
- REPAIR/REPLACE ANY AND ALL DAMAGE BY CONTRACTOR'S ACTIVITIES TO EXISTING UTILITIES THAT LIE OUTSIDE THE SCOPE OF WORK INDICATED ON THESE DRAWINGS. REPAIR/REPLACE ANY AND ALL DAMAGE TO EXISTING UTILITIES TO THE SATISFACTION OF BOTH THE UTILITY PROVIDER AND THE DIRECTOR'S REPRESENTATIVE.
- STAKES CANNOT BE USED WITHIN THE SECURE PERIMETER.
- RETURN ALL DISTURBED AREAS TO THEIR EXISTING COVER TYPES UPON CONSTRUCTION COMPLETION UNLESS OTHERWISE SPECIFIED.

DRAINAGE, EROSION AND SEDIMENT CONTROL MEASURES:

- STORM DRAIN SEDIMENT FILTERS: PRIOR TO COMMENCEMENT OF CONSTRUCTION, STONE BAGS TO BE CONSTRUCTED AT EXISTING STORM DRAINS, AS REQUIRED. MAINTAIN IN GOOD CONDITION UNTIL FINAL VEGETATIVE COVER IS WELL ESTABLISHED ON ALL DISTURBED AREAS UPSTREAM OF THE INLET.

LITTER AND CONSTRUCTION DEBRIS CONTROL MEASURES:

- COMPLY WITH THE FOLLOWING LITTER AND CONSTRUCTION DEBRIS CONTROL MEASURES.
 - DISPOSE OF ALL CONSTRUCTION DEBRIS AT AN OFF-SITE FACILITY APPROVED FOR THE TYPE OF MATERIAL GENERATED AT THE SITE.
 - NO BURNING OR BURY PITS WILL BE PERMITTED ON SITE.
- PRIOR TO LEAVING THE SITE EACH DAY, CONTRACTOR TO INSPECT THE PROJECT SITE AND PLACE ALL LITTER AND CONSTRUCTION DEBRIS IN APPROPRIATE STORAGE CONTAINERS.

CONSTRUCTION SEQUENCING:

COMPLY WITH THE FOLLOWING CONSTRUCTION SEQUENCE:

- ATTEND A PRE-CONSTRUCTION MEETING WITH THE NYSOGS REPRESENTATIVES AT LEAST ONE WEEK PRIOR TO STARTING CONSTRUCTION.
- COMMENCE SITE CONSTRUCTION ACTIVITIES AT THE DIRECTION OF THE DIRECTOR'S REPRESENTATIVE.
- MAINTAIN TEMPORARY CHAIN LINK FENCING AROUND STAGING AREAS AT ALL TIMES DURING CONSTRUCTION. AT THE CONCLUSION OF EACH WORK DAY, CHAIN LINK FENCE SHALL BE LOCKED TO PREVENT UNWANTED INTRUSION.

TRAFFIC MAINTENANCE AND PROTECTION:

- MAINTAIN PEDESTRIAN AND VEHICULAR TRAFFIC ROUTES AT ALL TIMES.
- MAINTAIN AT LEAST ONE LANE OF TRAFFIC DURING CONSTRUCTION SO MOVEMENT CAN CONTINUE AT ALL TIMES IN BOTH DIRECTIONS. PROVIDE FLAG PERSONS IN ORDER TO MANAGE TRAFFIC FLOW WHEN TEMPORARY LANE CLOSURES OCCUR.
- COORDINATE AND PLAN WORK TO PROVIDE OPEN TWO-WAY VEHICULAR TRAFFIC AT THE END OF EACH WORK DAY.
- PROVIDE TRAFFIC CONES/BARRELS/TAPE/SIGNAGE WITHIN 5 FEET OF PEDESTRIAN AND VEHICULAR WORK AREAS TO MAINTAIN SAFETY NEAR WORK ZONES.
- CORRECT DUSTY CONDITIONS RESULTING FROM THE WORK BY THE USE OF CALCIUM CHLORIDE AND/OR WATER. DISTRIBUTE WATER UNIFORMLY BY THE USE OF SUITABLE SPRAY HEADS OR SPRAY BAR. THE DIRECTOR'S REPRESENTATIVE WILL BE THE SOLE JUDGE OF THE NEED FOR THE APPLICATION OF WATER FOR DUST CONTROL. PROVIDE WATER AT THE INTERVALS AND LOCATIONS ORDERED BY THE DIRECTOR'S REPRESENTATIVE.
- EMERGENCY VEHICLE ACCESS TO EACH BUILDING SHALL BE MAINTAINED AT ALL TIMES.

EROSION AND SEDIMENT CONTROL PRACTICES:

PRACTICE	INITIAL PLACEMENT	DURATION OF USE
SEDIMENT BARRIER	PRIOR TO CONSTRUCTION ACTIVITIES	UNTIL SITE STABILIZATION
STORM INLET PROTECTION	PRIOR TO CONSTRUCTION ACTIVITIES	UNTIL SITE STABILIZATION
TEMPORARY SEEDING	BARE EARTH & SOIL STOCK PILES TO BE INACTIVE FOR 7 DAYS OR LONGER	UNTIL FINAL GRADING & SEEDING OR USE OF STOCKPILE
DUST CONTROL	COMMENCEMENT OF CONSTRUCTION ACTIVITIES	UNTIL SITE STABILIZATION

ALL ABOVE MEASURES ARE TEMPORARY. REFER TO PROJECT SWPPP, FOR MAINTENANCE SCHEDULE AND AT WHAT POINT EACH MEASURE WILL BE REMOVED.

EROSION AND SEDIMENT CONTROL AND STORM WATER CONTROL DEVICE MAINTENANCE:

- CONSTRUCTION DURATION
 - ALL EROSION AND SEDIMENT CONTROL DEVICES TO BE INSPECTED WEEKLY.
 - SEDIMENT BARRIER TO BE REPLACED WHEN BECOMING DEFORMED, TORN OR NO LONGER MEETING THE INSTALLATION DETAILS.
 - DRAINAGE STRUCTURES AND PIPING IMPACTED BY WORK RELATED TO THIS PROJECT TO BE CHECKED FOR CLOGGING AND SEDIMENT ACCUMULATION AND CLEANED IF REQUIRED.
- PROJECT COMPLETION
 - AT PROJECT COMPLETION AND PRIOR TO PROJECT CLOSE OUT, INSPECT ALL PERMANENT EROSION, SEDIMENT CONTROL AND STORM WATER MANAGEMENT PRACTICES.
 - ACCEPTABLE VEGETATION ESTABLISHMENT IN ACCORDANCE WITH SPECIFICATION SECTION 329120.
 - DRAINAGE STRUCTURES AND PIPING TO BE CHECKED FOR SEDIMENT ACCUMULATION AND CLEANED AS NECESSARY.

EROSION AND SEDIMENT CONTROL NOTES:

- THE SEDIMENT CONTROL MEASURES DETAILED TO BE IN PLACE PRIOR TO CONSTRUCTION START-UP FOR EACH CONSTRUCTION PHASE. THESE MEASURES CONSIST OF SEDIMENT BARRIERS AND STORM DRAIN INLET PROTECTION. ONCE CONSTRUCTED, ALL MEASURES TO BE PROPERLY MAINTAINED AND/OR REPLACED, AND THEN REMOVED FROM THE SITE ONCE VEGETATION AND PAVEMENT ARE IN PLACE.
- THE EROSION CONTROL MEASURES DEPICTED ON THESE PLANS ARE REQUIRED AS A MINIMUM. ADDITIONAL IMPLEMENTATION OF GENERAL AND PARTICULAR MEASURES AS DEEMED NECESSARY BY THE DIRECTOR'S REPRESENTATIVE MAY BE REQUIRED.
- THE LIMITS OF DISTURBANCE FOR ANY PROPOSED SITE CLEARING OR GRADING TO BE ESTABLISHED PRIOR TO COMMENCEMENT OF WORK.
- INSTALL SEDIMENT BARRIERS, TRAPS AND OUTLET PROTECTION. INSTALL ADDITIONAL TRAPS AND BARRIERS AS NEEDED DURING GRADING OPERATIONS.
- INSTALL RUNOFF CONTROL MEASURES (DIVERSIONS, OUTLET PROTECTION, ETC.) AND ADDITIONAL RUNOFF CONTROL MEASURES AS NEEDED DURING CONSTRUCTION.
- CLEAR AND GRADE THE PROPOSED AREA OF DISTURBANCE.
- INSTALL AND MAINTAIN ALL EROSION AND SEDIMENT CONTROL MEASURES THROUGHOUT THE COURSE OF CONSTRUCTION.
- WHEN ALL DISTURBED AREAS ARE STABLE, REMOVE ALL TEMPORARY EROSION AND SEDIMENT CONTROL MEASURES.
- TEMPORARY EROSION CONTROL PROTECTION BY MULCHING MUST BE CARRIED OUT AS THE FILL IS PROGRESSSED TO AVOID ALL POSSIBLE CONTAMINATION OF PONDS, STREAMS, OR OTHER WATERCOURSES. PLACEMENT OF JUTE MESH OVER THE MULCH IS RECOMMENDED TO PROVIDE POSITIVE "TACKING" OF THE MULCH AND INCREASED PROTECTION AGAINST EROSION.
- DAMAGE TO SURFACE WATERS RESULTING FROM EROSION AND SEDIMENTATION TO BE MINIMIZED BY STABILIZING DISTURBED AREAS AND BY REMOVING SEDIMENT FROM CONSTRUCTION SITE DISCHARGES.
- PLAN SITE PREPARATION ACTIVITIES TO MINIMIZE THE SCOPE AND DURATION OF SOIL DISRUPTION.
- PERMANENT TRAFFIC CORRIDORS TO BE ESTABLISHED AND "ROUTES OF CONVENIENCE" TO BE AVOIDED.
- TOPSOIL TO BE DISTURBED TO A UNIFORM DEPTH OVER THE APPLICATION AREA. DO NOT PLACE WHEN IT IS PARTIALLY FROZEN, MUDDY, ON FROZEN SLOPES OR OVER ICE, SNOW OR STANDING WATER.
- TOPSOIL TO BE PLACED AT A MINIMUM THICKNESS OF 4".
- FOLLOW TOPSOIL REQUIREMENTS IN ACCORDANCE WITH SECTION 329120.

REMOVAL NOTES

- CONFORM TO THE APPLICABLE CODE FOR THE DEMOLITION OF STRUCTURES, SAFETY OF ADJACENT STRUCTURES, HAULING AND DISPOSAL.
- MAINTAIN EXISTING UTILITIES TO REMAIN IN SERVICE AND PROTECT THEM AGAINST DAMAGE DURING SELECTIVE REMOVAL ACTIVITIES. DO NOT INTERRUPT EXISTING UTILITIES UNLESS AUTHORIZED BY DIRECTOR'S REPRESENTATIVE.
- LOCATE AND IDENTIFY ALL EXISTING UTILITIES WITHIN THE CLL. DISCONNECT AND SEAL OR CAP OFF AFFECTED UTILITIES.
- PROVIDE, ERECT AND MAINTAIN TEMPORARY BARRIERS AND SECURITY DEVICES.
- REMOVE COMPONENTS IN AN ORDERLY AND CAREFUL MANNER.
- PROTECT EXISTING FEATURES THAT ARE TO REMAIN.
- MAINTAIN INGRESS AND EGRESS AT ALL TIMES.
- CEASE OPERATIONS IMMEDIATELY IF ADJACENT STRUCTURES APPEAR TO BE IN DANGER.
- CONDUCT REMOVAL TO PREVENT INJURY TO PEOPLE AND PROPERTY. ENSURE SAFE PASSAGE OF PEOPLE IN VICINITY OF DEMOLITION.
- DISPOSE OF ALL REMOVED MATERIALS LEGALLY OFF-SITE IN ACCORDANCE WITH LOCAL, STATE AND FEDERAL REGULATIONS (SEE GENERAL NOTE 13).

GRADING NOTES:

- ALL EARTH WORK SHALL BE SMOOTHLY AND EVENLY BLENDED INTO EXISTING CONDITIONS.
- THE EROSION CONTROL MEASURES DEPICTED ON THESE PLANS ARE REQUIRED AS A MINIMUM. IMPLEMENT ALL GENERAL AND PARTICULAR MEASURES AS DEEMED NECESSARY BY THE DIRECTOR'S REPRESENTATIVE.

- BLENDED ALL EARTHWORK INTO EXISTING GRADES AT LIMITS OF GRADING WORK.
- STORAGE AREAS FOR CONTRACTOR'S EQUIPMENT AND MATERIALS SHALL BE WITHIN THE LIMITS OF THE PROPERTY PROPOSED FOR DEVELOPMENT ONLY.
- PROVIDE ALL FIELD LAYOUT, AS-BUILT PLANS SHALL BE REVIEWED BY THE DIRECTOR'S REPRESENTATIVE. PROVIDE ANY CORRECTION OR OMISSION TO THE SATISFACTION OF THE DIRECTOR'S REPRESENTATIVE BEFORE ACCEPTANCE.

PAVING NOTES

- SUBBASE AND ASPHALT TYPES SHALL CONFORM TO THE REFERENCED SECTION OF THE LATEST VERSION OF THE NEW YORK STATE DEPARTMENT OF TRANSPORTATION STANDARD SPECIFICATIONS.
- NO VEHICULAR TRAFFIC SHALL BE PERMITTED ON SUBBASE AFTER COMPACTION PRIOR TO PAVING.
- NO EXCESS ASPHALT SPOIL PERMITTED ON-SITE UNLESS DIRECTED BY DIRECTOR'S REPRESENTATIVE.
- TACK COAT SHALL BE APPLIED TO ASPHALT SURFACES AS REQUIRED BY DETAILS, CURBS AND STRUCTURES ABUTTING PAVEMENT.
- PITCH/SLOPE FINISH GRADE PAVEMENT SURFACES TO TRANSITION EVENLY BETWEEN SPOT GRADES. SURFACES SHOULD BE FREE FROM IRREGULARITIES TO PREVENT PONDING. PROVIDE POSITIVE DRAINAGE TO EXISTING DRAINAGE STRUCTURES.
- UP TO 10% RAP MAY BE USED IN THE BINDER COURSE

ABBREVIATIONS:

±	PLUS/MINUS	EXISTING:	
A.L.O.	APPROXIMATE LOCATION OF	---280---	CONTOUR LINE MAJOR
APPROX.	APPROXIMATELY	---281---	CONTOUR LINE MINOR
BC	BOTTOM OF CURB	~~~~~	BRUSH/PLANTING BED
BOL	BOLLARD	— · —	EDGE WATER
BW	BOTTOM OF WALL	— T —	UNDERGROUND TEL/COMM
CB	CATCH BASIN	— W —	UNDERGROUND WATER
CBJ	CONCRETE JERSEY BARRIER	— ST —	UNDERGROUND STORM
CBR	CATCH BASIN— ROUND	— UGE —	UNDERGROUND ELECTRIC WIRE
CHW	CONCRETE HEADWALL	— X —	FENCE
CLL	CONTRACT LIMIT LINE	— GAS —	UNDERGROUND GAS
CMP	CORRUGATED METAL PIPE	⊗	MAPPING, POINT, NAIL
COM	COMMUNICATIONS	⊕	SIGN, SINGLE POST
CONC	CONCRETE	⊕	ACCESSIBLE PARKING SPACE
CP	CONTROL POINT	⊕	UTILITY, ELECTRIC, METER
CTV	CABLE TV SERVICE BOX	⊕	UTILITY, ELECTRIC, MANHOLE
CLP	DOUBLE LIGHT POLE	⊕	UTILITY, GAS, METER
DYL	DOUBLE YELLOW LINE	⊕	UTILITY, LIGHTING, POLE
EL	ELEVATION	⊕	UTILITY, POLE, WITH UTILITY EXISTING
EHH	ELECTRIC HANDHOLE	⊕	UTILITY, POLE, GUY WIRE
EMH	ELECTRIC MANHOLE	⊕	UTILITY, UNKNOWN, WELLS
EMSS	EMERGENCY MEDICAL SERVICE SYSTEM	⊕	CONTROL, BASELINE, POINT
EOM	EMPLOYEE OF THE MONTH	⊕	DRAINAGE, INVERT
EOP	EDGE OF PAVEMENT	⊕	DRAINAGE, STRUCTURE, RECTANGULAR
EX	EXISTING	⊕	DRAINAGE, STRUCTURE, ROUND
FES	FLARED END SECTION	⊕	LANDSCAPE, FLAG POLE
FOCC	FACE OF CONCRETE CURB	⊕	LANDSCAPE, MAILBOX
FT	FEET	⊕	LANDSCAPE, POST
GL	GROUND LIGHT	⊕	LANDSCAPE, ROCK, BOULDER
GNSS	GLOBAL NAVIGATIONAL SATELLITE SYSTEM	⊕	LANDSCAPE, SHRUB, CONIFEROUS
GSP	GAS STAND PIPE	⊕	LANDSCAPE, TREE, CONIFEROUS
GV	GATE VALVE	⊕	LANDSCAPE, TREE, DECIDUOUS
HC	HANDICAPPED	⊕	LANDSCAPE, TREE, STUMPS
HYD	FIRE HYDRANT	⊕	NOT AT HEAD OF ARROW
INV	INVERT	⊕	PERSONAL ALARM SYSTEM
LNDR	LANDING	⊕	POWER MANHOLE
LS	LANDSCAPE STONE	⊕	POLYVINYL CHLORIDE
MISC	MISCELLANEOUS	⊕	PAVEMENT
MCFR	METAL CAP IRON ROD FOUND	⊕	OVERHEAD UTILITY LINE
MH	MANHOLE	⊕	RED CAPPED IRON ROD SET
MT	MEDICAL TRANSPORT	⊕	REFLECTOR
MTV	MEDICAL TRANSPORT VEHICLE	⊕	SANITARY
NYSEG	NEW YORK STATE ELECTRIC AND GAS UTILITY POLE	⊕	SINGLE LIGHT POLE
NYT	NEW YORK TELEPHONE UTILITY POLE	⊕	SPRINKLER VALVE
NAHA	NOT AT HEAD OF ARROW	⊕	SINGLE WHITE LINE
PAS	PERSONAL ALARM SYSTEM	⊕	TOP OF CURB
PMH	POWER MANHOLE	⊕	TOP OF FRAME
PVC	POLYVINYL CHLORIDE	⊕	TRAFFIC SIGNAL BOX
PVMT	PAVEMENT	⊕	TYPICAL
OHUL	OVERHEAD UTILITY LINE	⊕	TOP OF WALL
ROIRS	RED CAPPED IRON ROD SET	⊕	UNDERGROUND ELECTRIC
RCP	REINFORCED CONCRETE PIPE	⊕	UTILITY POLE
RFT	REFLECTOR	⊕	VERTICAL
SAN	SANITARY	⊕	WHEEL CHAIR VEHICLE
SLP	SINGLE LIGHT POLE	⊕	WITH
SV	SPRINKLER VALVE	⊕	
SWL	SINGLE WHITE LINE	⊕	
TC	TOP OF CURB	⊕	
TF	TOP OF FRAME	⊕	
TSB	TRAFFIC SIGNAL BOX	⊕	
(TYP.)	TYPICAL	⊕	
TW	TOP OF WALL	⊕	
UGE	UNDERGROUND ELECTRIC	⊕	
UP	UTILITY POLE	⊕	
VERT	VERTICAL	⊕	
WCV	WHEEL CHAIR VEHICLE	⊕	
W/	WITH	⊕	

SWPPP NOTES:

- INSPECT THE PROJECT SITE AND ALL EROSION AND SEDIMENT CONTROL PRACTICES AFTER EACH RAIN EVENT AND ON A WEEKLY BASIS IN ACCORDANCE WITH THE PROJECT SPECIFIC SWPPP.
- REPAIR AND REMEDY ANY EROSION AND SEDIMENT CONTROL PRACTICES OBSERVED TO BE DEFICIENT OR IN NEED OF REPAIR OR AT THE DIRECTION OF THE DIRECTOR'S REPRESENTATIVE.
- IMPLEMENT AND COMPLY WITH ALL THE PROJECT-SPECIFIC SWPPP REQUIREMENTS.
- STABILIZE DISTURBED AREAS IMMEDIATELY BUT NOT MORE THAN SEVEN DAYS AFTER SOIL DISTURBANCE HAS CEASED.

BEDROCK REMOVAL NOTES:

- BEDROCK DEPTH VARIES THROUGHOUT THE CLL FROM THE SURFACE TO GREATER THAN 10 FEET BELOW GRADE.
- BORING INFORMATION IS INCLUDED ON DRAWING C-100.
- BLASTING IS NOT ALLOWED.
- ASSUME AND INCLUDE IN BID THAT UP TO 1,500 CUBIC YARDS OF ROCK REMOVAL WILL BE REQUIRED.
- SEE SPECIFICATION 312316 FOR ADDITIONAL INFORMATION REGARDING ROCK REMOVAL.

NEW:

	DETAIL NUMBER
	DETAIL REFERENCE
	DRAWING NUMBER
	TOP OF FRAME (RIM) ELEVATION
	CONTRACT LIMIT LINE
	TEMPORARY CONSTRUCTION FENCE
	SEDIMENT BARRIER PROTECTION
	TEMPORARY TREE PROTECTION FENCE
	MINOR CONTOUR LINE
	MAJOR CONTOUR LINE
	MATCHLINE AND/OR LIMITS OF PAVEMENT/LANDSCAPE AREA
	HORIZONTAL CONTROL POINT REFERENCE, REFER TO POINT TABLE (DRAWINGS C-130 & C-131)
	LINEAR FEATURE TO BE REMOVED
	CONCRETE CURBING
	REPLACED CHAIN LINK FENCE OR NEW CHAIN LINK FENCE
	PIPE TO BE ABANDONED
	FULL STORM STRUCTURE AND/OR PIPE REMOVAL
	AREA OF GRAVEL/LAWN REMOVAL
	AREA OF FULL DEPTH ASPHALT AND SUBBASE REMOVAL
	AREA OF CONCRETE SIDEWALK REMOVAL
	AREA OF GRAVEL REMOVAL
	SYMBOL FOR SITE FEATURE TO BE REMOVED
	CONCRETE SECTION OR SIDEWALK AREA
	STABILIZED CONSTRUCTION ENTRANCE
	AREA OF FULL DEPTH ASPHALT CONSTRUCTION AS PER PAVEMENT SECTION
	AREA OF GRAVEL
	RIP-RAP
	AREA OF TOPSOIL AND SEEDING
	PLANTER
	SPOT ELEVATION
	EXISTING SPOT ELEVATION REFERENCE
	STORM STRUCTURES
	STORM PIPE
	PAVED OR GRASSED SWALE
	INLET PROTECTION
	DIMENSION
	WING CURB WITH TRANSITION

WARNING:
THE ALTERATION OF THIS MATERIAL IN ANY WAY, UNLESS DONE UNDER THE DIRECTION OF A COMPARABLE PROFESSIONAL, I.E. ARCHITECT FOR AN ARCHITECT, ENGINEER FOR AN ENGINEER OR LANDSCAPE ARCHITECT FOR A LANDSCAPE ARCHITECT, IS A VIOLATION OF THE NEW YORK STATE EDUCATION LAW AND/OR REGULATIONS AND IS A CLASS "A" MISDEMEANOR.



CONSTRUCTION

TITLE: **PROVIDE ASPHALT PAVING AND IMPROVE DRAINAGE**

LOCATION: **HIGHLAND RESIDENTIAL CENTER
629 N CHODIKEE LAKE ROAD
HIGHLAND, NEW YORK**

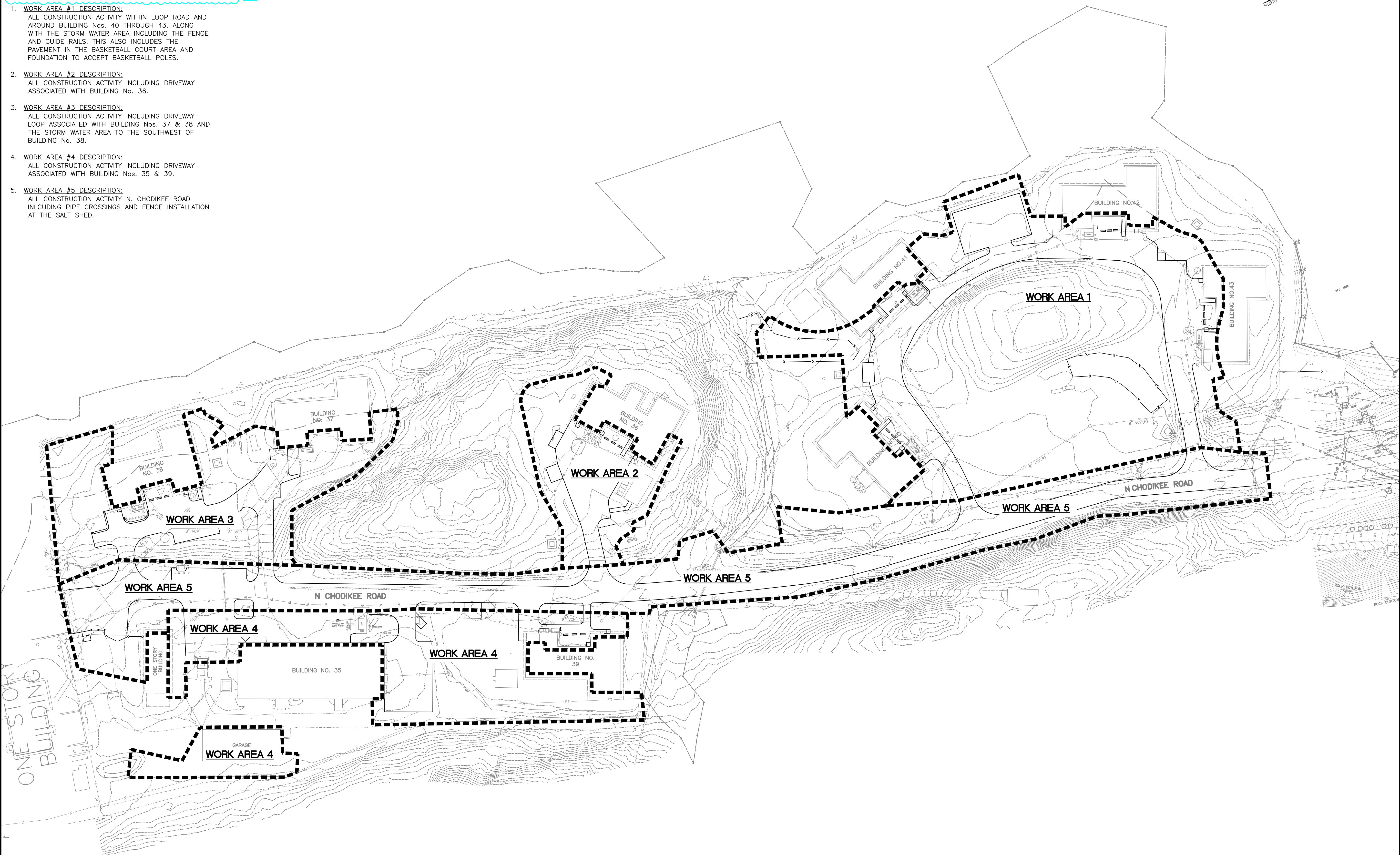
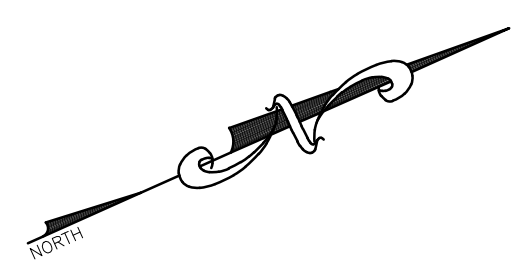
CLIENT: **NEW YORK STATE OFFICE OF CHILDREN AND FAMILY SERVICES**

CRW	DATE	DESCRIPTION
BPO	10/15/2024	ADDENDUM No. 2
MARK	07/16/2024	BID DOCUMENTS
PROJECT NUMBER:	47538 - C	
DESIGNED BY:	DBR	
DRAWN BY:	DBR	
FIELD CHECK:	BPO	
APPROVED:	BPO	
SHEET TITLE:	NOTES & LEGEND	
DRAWING NUMBER:	G-002	
SHEET	2	OF 21

CONSTRUCTION SEQUENCING KEY:

DUE TO THIS PROJECT BEING WITHIN A SECURE FACILITY, THE CONTRACTOR IS TO PERFORM THE WORK OF THE CONTRACT IN NUMERICAL ORDER OF WORK AREAS AS SHOWN ON THIS PLAN. VARIATION FROM THE SEQUENCING SHOWN WILL NOT BE ALLOWED.

1. **WORK AREA #1 DESCRIPTION:**
ALL CONSTRUCTION ACTIVITY WITHIN LOOP ROAD AND AROUND BUILDING Nos. 40 THROUGH 43, ALONG WITH THE STORM WATER AREA INCLUDING THE FENCE AND GUIDE RAILS. THIS ALSO INCLUDES THE PAVEMENT IN THE BASKETBALL COURT AREA AND FOUNDATION TO ACCEPT BASKETBALL POLES.
2. **WORK AREA #2 DESCRIPTION:**
ALL CONSTRUCTION ACTIVITY INCLUDING DRIVEWAY ASSOCIATED WITH BUILDING No. 36.
3. **WORK AREA #3 DESCRIPTION:**
ALL CONSTRUCTION ACTIVITY INCLUDING DRIVEWAY LOOP ASSOCIATED WITH BUILDING Nos. 37 & 38 AND THE STORM WATER AREA TO THE SOUTHWEST OF BUILDING No. 38.
4. **WORK AREA #4 DESCRIPTION:**
ALL CONSTRUCTION ACTIVITY INCLUDING DRIVEWAY ASSOCIATED WITH BUILDING Nos. 35 & 39.
5. **WORK AREA #5 DESCRIPTION:**
ALL CONSTRUCTION ACTIVITY N. CHODIKEE ROAD INCLUDING PIPE CROSSINGS AND FENCE INSTALLATION AT THE SALT SHED.



WARNING:
THE ALTERATION OF THIS MATERIAL IN ANY WAY, UNLESS DONE UNDER THE DIRECTION OF A COMPARABLE PROFESSIONAL, I.E. ARCHITECT FOR AN ARCHITECT, ENGINEER FOR AN ENGINEER OR LANDSCAPE ARCHITECT FOR A LANDSCAPE ARCHITECT, IS A VIOLATION OF THE NEW YORK STATE EDUCATION LAW AND/OR REGULATIONS AND IS A CLASS "A" MISDEMEANOR.



CONTRACT:

TITLE:
PROVIDE ASPHALT PAVING AND IMPROVE DRAINAGE

LOCATION:
HIGHLAND RESIDENTIAL CENTER
629 N CHODIKEE LAKE ROAD
HIGHLAND, NEW YORK

CLIENT:
NEW YORK STATE OFFICE OF CHILDREN AND FAMILY SERVICES

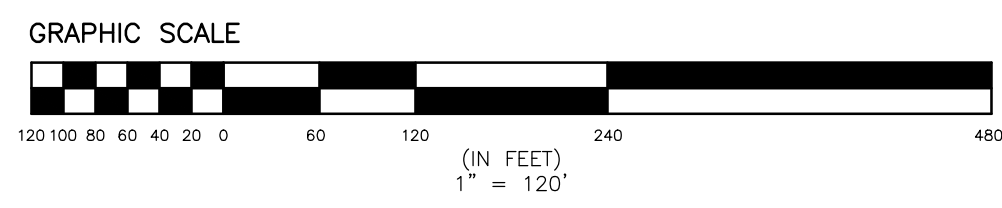
CRW	10/15/2024	ADDENDUM No. 2
BPO	07/16/2024	BID DOCUMENTS
MARK	DATE	DESCRIPTION
PROJECT NUMBER:	47538	- C
DESIGNED BY:	DBR	
DRAWN BY:	DBR	
FIELD CHECK:	BPO	
APPROVED:	BPO	

SHEET TITLE:
CONSTRUCTION SEQUENCING

DRAWING NUMBER:
C-102

SHEET 5 OF 21

REVISED DRAWING 10/15/2024



Oct 18, 2024 - 11:17am
 C:\workfiles\environmental design\partnership\sharepoint site - documents\0 A-Z\ALSTER\Highland\chodikee road\05-dwg\Detailed\SHEETS\C-102.dwg
 36x24 PLOT SHEET

REMOVALS AND STAGING PLAN LEGEND:

- 3
C-501
DETAIL NUMBER
- DETAIL REFERENCE
- CLL CONTRACT LIMIT LINE
- LINEAR FEATURE TO BE REMOVED
- TEMPORARY TREE PROTECTION FENCE
- MATCHLINE AND/OR LIMITS OF PAVEMENT/LANDSCAPE AREA
- SEDIMENT BARRIER PROTECTION
- PIPE TO BE ABANDONED
- SYMBOL FOR SITE FEATURE TO BE REMOVED
- AREA OF FULL DEPTH ASPHALT AND SUBBASE REMOVAL
- AREA OF CONCRETE SIDEWALK REMOVAL
- AREA OF GRAVEL REMOVAL
- AREA OF GRAVEL/LAWN REMOVAL
- INLET PROTECTION

REMOVALS AND STAGING PLAN NOTES:

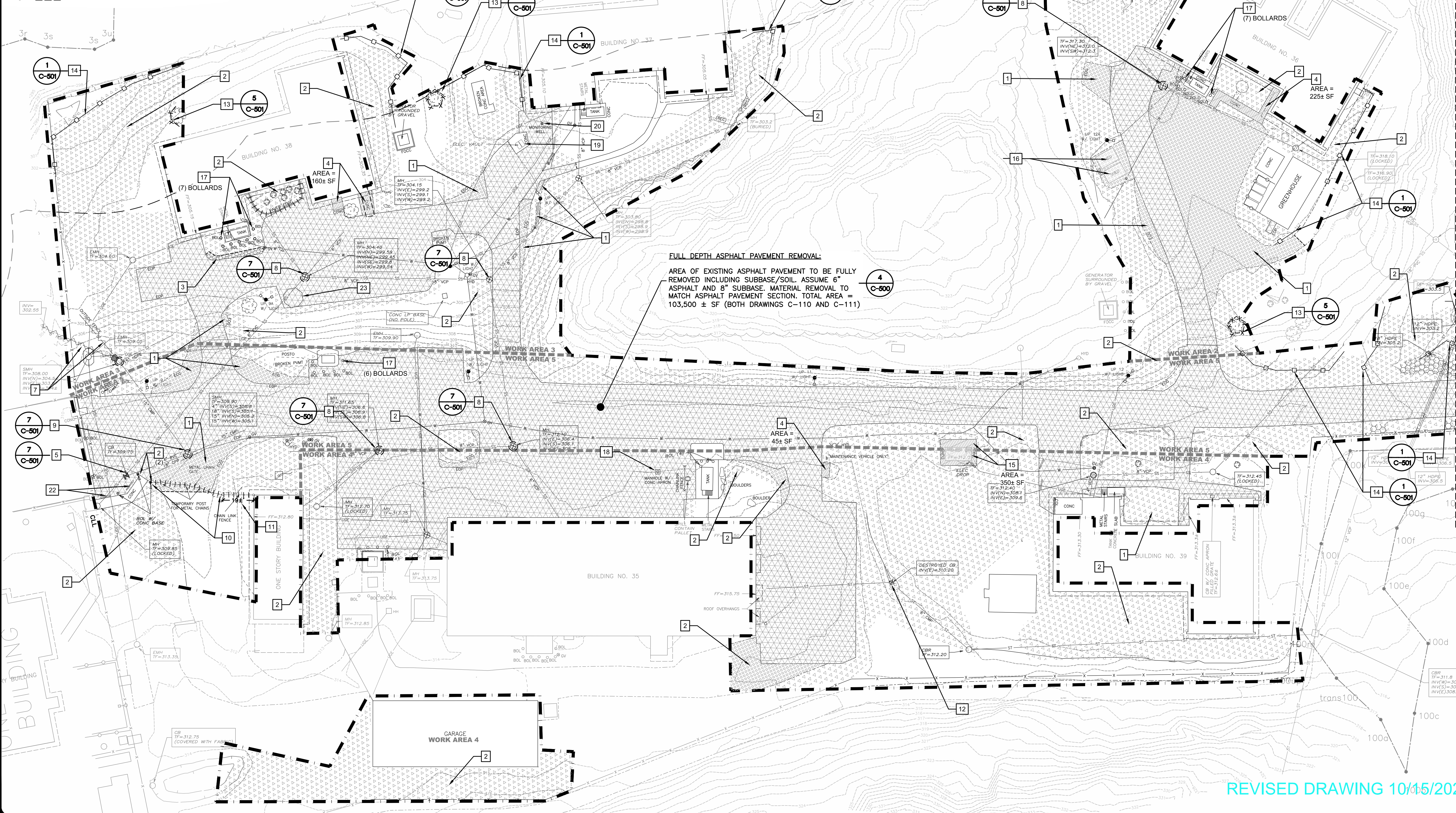
1. RETURN ALL DISTURBED AREAS TO THEIR EXISTING COVER TYPES UPON CONSTRUCTION COMPLETION UNLESS OTHERWISE SPECIFIED.
2. LOCATE AND VERIFY THE EXACT LOCATION AND DEPTH OF THE EXISTING GAS MAINS, ELECTRICAL CONDUITS, STORM PIPES AND ALL OTHER UTILITIES POTENTIALLY IN THE PROJECT AREA IN FIELD PRIOR TO CONSTRUCTION PER SPECIFICATION SECTION 023313. NOTIFY DIRECTOR'S REPRESENTATIVE IF LOCATION CONFLICTS WITH LAYOUT.
3. INSTALL SEDIMENT CONTROLS PRIOR TO ANY REMOVAL ACTIVITIES.
4. MAINTAIN EMERGENCY ACCESS TO BUILDINGS AT ALL TIMES.
5. REPAIR ANY DAMAGE TO EXISTING FENCE OR GATES.
6. EXISTING TOPSOIL REMOVED TO BE STOCKPILED ON-SITE FOR RE-USE AS DIRECTED BY DIRECTOR'S REPRESENTATIVE.
7. EXISTING GRAVEL/SUBBASE AREAS REMOVED SHALL BE REMOVED FROM THE SITE AND DISPOSED OF IN A LEGAL MANNER OFF-SITE.
8. SEE DRAWING G-002 GENERAL NOTE 13 FOR SOIL TESTING REQUIREMENTS PRIOR TO EXPORTING ANY SOIL MATERIALS FROM SITE.

REMOVALS AND STAGING PLAN KEY:

- GRAVEL AREA REMOVAL:**
APPROXIMATE LOCATION OF GRAVEL AND/OR LAWN TO BE REMOVED. SEE DRAWINGS C-140 THROUGH C-144 FOR GRADING. ASSUME 12" REMOVAL DEPTH. MATERIAL REMOVAL TO MATCH ASPHALT PAVEMENT SECTION DETAIL.
- LAWN AREA REMOVAL:**
APPROXIMATE LOCATION OF LAWN AREA, SOIL, AND/OR SMALL SHRUBS TO BE REMOVED, GRADED AND/OR RECONFIGURED. SEE DRAWINGS C-140 THROUGH C-144 FOR GRADING.
- 1 REMOVE EXISTING RIP-RAP.
 - 2 REMOVE CONCRETE AND SUBBASE/SOIL. MATERIAL TO MATCH SIDEWALK OR PAVEMENT DETAILS. REFER TO SITE PLAN FOR PAVEMENT AND SIDEWALK PLACEMENT.
 - 3 SAW CUT, REMOVE FRAME AND GRATE AND PROVIDE INLET PROTECTION. CLEAN OUT STRUCTURE AND REPLACE AT FINISHED GRADE. SEE ALSO SITE PLAN AND GRADING PLAN.
 - 4 PROTECT EXISTING GAZEBO DURING CONSTRUCTION AND RELOCATE FOR PAVEMENT WORK. REPLACE AS PER SITE PLAN ONCE PAVEMENT WORK IS COMPLETED.
 - 5 PLUG EXISTING 8" STORM PIPE WITH GROUT AND ABANDON IN PLACE.
 - 6 SAW-CUT, REMOVE FRAME AND GRATE AND PROVIDE INLET PROTECTION.
 - 7 SAW-CUT, REMOVE FRAME AND GRATE AND PROVIDE INLET PROTECTION. PREPARE FOR NEW INLET PIPE, SEE GRADING AND DRAINAGE PLAN.
 - 8 REMOVE TEMPORARY METAL CHAIN GATE AND TEMPORARY POSTS. (45± LF). RETURN TO DIRECTOR'S REPRESENTATIVE.
 - 9 REMOVE 19± LF EXISTING 4±" HIGH CHAIN LINK FENCE.
 - 10 REMOVE CATCH BASIN, PROTECT EXISTING PIPES AND PREPARE FOR NEW CATCH BASIN. REFER TO SITE AND GRADING PLANS.
 - 11 PROVIDE TREE PROTECTION AS PER DETAIL.
 - 12 PROVIDE SEDIMENT BARRIER PROTECTION PER DETAIL.
 - 13 REMOVE GRAVEL AND SALVAGE EXISTING SHEDS. STORE SHED ON-SITE AS DIRECTED BY THE DIRECTOR'S REPRESENTATIVE.
 - 14 PROTECT EXISTING BOLLARDS. REPLACE ANY DAMAGED BOLLARDS DURING CONSTRUCTION. PREPARE FOR PAVEMENT OR GRAVEL AROUND EACH ONE.
 - 15 PROTECT EXISTING MANHOLE WITH CONCRETE APRON. REPAIR/REPLACE ANY DAMAGE.
 - 16 PROTECT EXISTING ELECTRICAL VAULT WITH CONCRETE APRON. REPAIR/REPLACE ANY DAMAGE.
 - 17 PROTECT EXISTING WELL. REPAIR/REPLACE ANY DAMAGE.
 - 18 REMOVE CONCRETE/STEEL BOLLARDS.
 - 19 REMOVE PARKING BUMPERS AND SAVE FOR REINSTALLATION.
 - 20 TEMPORARILY RELOCATE GAZEBO FOR UNTIL REMOVALS AND PAVING ARE COMPLETE.

GRAPHIC SCALE
30 25 20 15 10 5 0 15 30 (IN FEET)
1" = 30'

TOTAL REMOVALS FOR PROJECT 47538
 103,500± SF ASPHALT
 29,500± SF GRAVEL
 167,500± SF LAWN
 2,200± SF CONCRETE



NEW YORK STATE OFFICE OF CHILDREN AND FAMILY SERVICES
Office of General Services
DESIGN & CONSTRUCTION

CONSULTANT: ENVIRONMENTAL DESIGN PARTNERSHIP, LLP
CERTIFICATE OF AUTHORIZATION #: 037711

edp ENVIRONMENTAL DESIGN PARTNERSHIP, LLP.
edplp.com

WARNING:
THE ALTERATION OF THIS MATERIAL IN ANY WAY, UNLESS DONE UNDER THE DIRECTION OF A COMPARABLE PROFESSIONAL, I.E. ARCHITECT FOR AN ARCHITECT, ENGINEER FOR AN ENGINEER OR LANDSCAPE ARCHITECT FOR A LANDSCAPE ARCHITECT, IS A VIOLATION OF THE NEW YORK STATE EDUCATION LAW AND/OR REGULATIONS AND IS A CLASS "A" MISDEMEANOR.

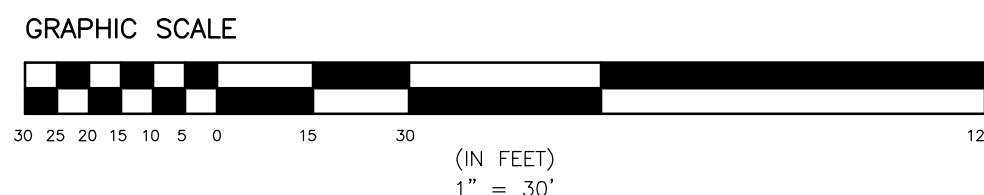
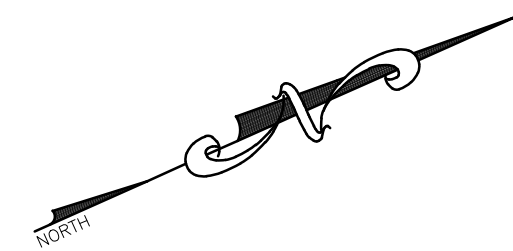
STATE OF NEW YORK
PAUL OSTERPOL
LICENSED PROFESSIONAL ENGINEER
079236

CONTRACT: **CONSTRUCTION**
TITLE: PROVIDE ASPHALT PAVING AND IMPROVE DRAINAGE
LOCATION: HIGHLAND RESIDENTIAL CENTER
629 N CHODIKEE LAKE ROAD
HIGHLAND, NEW YORK
CLIENT: NEW YORK STATE OFFICE OF CHILDREN AND FAMILY SERVICES

CRW	10/15/2024	ADDENDUM No. 2
BPO	07/16/2024	BID DOCUMENTS
MARK	DATE	DESCRIPTION
PROJECT NUMBER:	47538 - C	
DESIGNED BY:	DBR	
DRAWN BY:	DBR	
FIELD CHECK:	BPO	
APPROVED:	BPO	
SHEET TITLE:	REMOVALS AND STAGING PLAN	
DRAWING NUMBER:	C-110	
SHEET	6	of 21

REVISED DRAWING 10/15/2024

Oct 17, 2024 - 7:33 am
 C:\workfiles\environmental design\partnership\sharepoint site - documents\0 A-Z\ALSTER\Highland\chodikee road\05-dwg\Detailed\SHEETS\C-110.dwg
 38x24 PLOT SHEET



REMOVALS AND STAGING PLAN KEY:

GRAVEL AREA REMOVAL:

1 APPROXIMATE LOCATION OF GRAVEL AND/OR LAWN TO BE REMOVED. SEE DRAWINGS C-140 THROUGH C-144 FOR GRADING. ASSUME 12" REMOVAL DEPTH. MATERIAL REMOVAL TO MATCH ASPHALT PAVEMENT SECTION DETAIL.

LAWN AREA REMOVAL:

2 APPROXIMATE LOCATION OF LAWN AREA, SOIL, AND/OR SMALL SHRUBS TO BE REMOVED, GRADED AND/OR RECONFIGURED. SEE DRAWINGS C-140 THROUGH C-144 FOR GRADING.

3 REMOVE CONCRETE AND SUBBASE/SOIL. MATERIAL TO MATCH SIDEWALK OR PAVEMENT DETAILS. REFER TO SITE PLAN FOR PAVEMENT AND SIDEWALK PLACEMENT.

4 PLUG EXISTING 8" STORM PIPE WITH GROUT AND ABANDON IN PLACE.

5 SAW-CUT, REMOVE FRAME AND GRATE AND PROVIDE INLET PROTECTION.

FULL DEPTH ASPHALT PAVEMENT REMOVAL:

AREA OF EXISTING ASPHALT PAVEMENT TO BE FULLY REMOVED INCLUDING SUBBASE/SOIL. ASSUME 6" ASPHALT AND 8" SUBBASE. MATERIAL REMOVAL TO MATCH ASPHALT PAVEMENT SECTION.

- 6 PROVIDE INLET PROTECTION TO EXISTING STORM MANHOLE.
- 7 REMOVE TEMPORARY METAL CHAIN GATE AND TEMPORARY POSTS. (45± LF). RETURN TO DIRECTOR'S REPRESENTATIVE.
- 8 REMOVE 19± LF EXISTING 4±' HIGH CHAIN LINK FENCE.
- 9 REMOVE CATCH BASIN, PROTECT EXISTING PIPES AND PREPARE FOR NEW CATCH BASIN. REFER TO SITE AND GRADING PLANS.
- 10 PROVIDE TREE PROTECTION AS PER DETAIL.
- 11 PROVIDE SEDIMENT BARRIER PROTECTION AS PER DETAIL.
- 12 REMOVE EXISTING STORM PIPE.
- 13 REMOVE CONCRETE PAD AND SALVAGE EXISTING SHED. STORE SHED ON-SITE AS DIRECTED BY THE DIRECTOR'S REPRESENTATIVE.

- 14 REMOVE 350± SF OF CONCRETE PAD AND SALVAGE EXISTING SHED. STORE SHED ON-SITE AS DIRECTED BY THE DIRECTOR'S REPRESENTATIVE.
- 15 REMOVE AND SALVAGE EXISTING 6" HIGH CHAIN LINK FENCE. STORE AS DIRECTED BY THE DIRECTOR'S REPRESENTATIVE AND REUSE FOR STORMWATER AREAS AS PER SITE PLAN.
- 16 PROTECT EXISTING SHRUB DURING CONSTRUCTION. ANY DAMAGE WILL REQUIRE REPLACEMENT.
- 17 SAW CUT, REMOVE FRAME AND GRATE AND PROVIDE INLET PROTECTION. CLEAN OUT STRUCTURE AND REPLACE AT FINISHED GRADE. SEE ALSO SITE PLAN AND GRADING PLAN.
- 18 PROTECT EXISTING BOLLARDS. REPLACE ANY DAMAGED BOLLARDS DURING CONSTRUCTION. PREPARE FOR PAVEMENT OR GRAVEL AROUND EACH ONE.

- 19 EXISTING FENCING AREA TO BE UTILIZED AS STAGING AREA DURING CONSTRUCTION.
- 20 SOIL STOCKPILE AREA.
- 21 RELOCATE BLEACHERS AS NECESSARY TO PERFORM SITE GRADING. REFER TO GRADING AND DRAINAGE PLAN. PROTECT EXISTING LIGHT AND ELECTRICAL WIRES. REPAIR/REPLACE ANY DAMAGE.
- 22 REMOVE CONCRETE CURB.
- 23 REMOVE EXISTING BASKET BALL GOAL AND (2) CONCRETE BASES.
- 24 BOLLARDS AND CONCRETE TO REMAIN. REPLACE ANY DAMAGED BOLLARDS AND REPAIR CONCRETE.
- 25 REMOVE 30± LF EXISTING GUIDE RAIL AND SALVAGE FOR RE-USE.

REMOVALS AND STAGING PLAN LEGEND:

- DETAIL NUMBER
- C-501 DRAWING NUMBER
- CLL CONTRACT LIMIT LINE
- ++++ LINEAR FEATURE TO BE REMOVED
- MATCHLINE AND/OR LIMITS OF PAVEMENT/LANDSCAPE AREA
- SEDIMENT BARRIER PROTECTION
- ✕ SYMBOL FOR SITE FEATURE TO BE REMOVED
- FULL STORM STRUCTURE AND/OR PIPE REMOVAL
- ▨ AREA OF FULL DEPTH ASPHALT AND SUBBASE REMOVAL
- ▩ AREA OF CONCRETE SIDEWALK REMOVAL
- ▧ AREA OF GRAVEL REMOVAL
- ▦ AREA OF GRAVEL/LAWN REMOVAL
- INLET PROTECTION

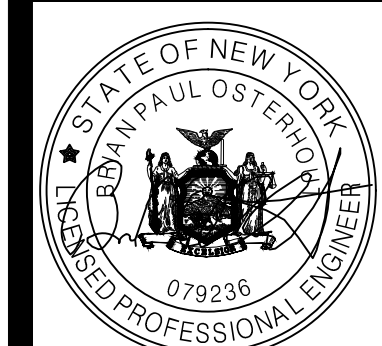


DESIGN & CONSTRUCTION

CONSULTANT: ENVIRONMENTAL DESIGN PARTNERSHIP, LLP
CERTIFICATE OF AUTHORIZATION #: 037711



WARNING:
THE ALTERATION OF THIS MATERIAL IN ANY WAY, UNLESS DONE UNDER THE DIRECTION OF A COMPARABLE PROFESSIONAL, I.E. ARCHITECT FOR AN ARCHITECT, ENGINEER FOR AN ENGINEER OR LANDSCAPE ARCHITECT FOR A LANDSCAPE ARCHITECT, IS A VIOLATION OF THE NEW YORK STATE EDUCATION LAW AND/OR REGULATIONS AND IS A CLASS "A" MISDEMEANOR.



CONSTRUCTION

TITLE:
PROVIDE ASPHALT PAVING AND IMPROVE DRAINAGE
LOCATION:
HIGHLAND RESIDENTIAL CENTER
629 N CHODIKEE LAKE ROAD
HIGHLAND, NEW YORK

CLIENT:
NEW YORK STATE OFFICE OF CHILDREN AND FAMILY SERVICES

REMOVALS AND STAGING PLAN NOTES:

1. RETURN ALL DISTURBED AREAS TO THEIR EXISTING COVER TYPES UPON CONSTRUCTION COMPLETION UNLESS OTHERWISE SPECIFIED.
2. LOCATE AND VERIFY THE EXACT LOCATION AND DEPTH OF THE EXISTING GAS MAINS, ELECTRICAL CONDUITS, STORM PIPES AND ALL OTHER UTILITIES POTENTIALLY IN THE PROJECT AREA IN FIELD PRIOR TO CONSTRUCTION PER SPECIFICATION SECTION 023313. NOTIFY DIRECTOR'S REPRESENTATIVE IF LOCATION CONFLICTS WITH LAYOUT.
3. INSTALL SEDIMENT CONTROLS PRIOR TO ANY REMOVAL ACTIVITIES.
4. MAINTAIN EMERGENCY ACCESS TO BUILDINGS AT ALL TIMES.
5. REPAIR ANY DAMAGE TO EXISTING FENCE OR GATES.
6. EXISTING TOPSOIL REMOVED TO BE STOCKPILED ON-SITE FOR RE-USE AS DIRECTED BY DIRECTOR'S REPRESENTATIVE.
7. EXISTING GRAVEL/SUBBASE AREAS REMOVED SHALL BE REMOVED FROM THE SITE AND DISPOSED OF IN A LEGAL MANNER OFF-SITE.
8. SEE DRAWING G-002 GENERAL NOTE 13 FOR SOIL TESTING REQUIREMENTS PRIOR TO EXPORTING ANY SOIL MATERIALS FROM SITE.

TOTAL REMOVALS FOR PROJECT 47538

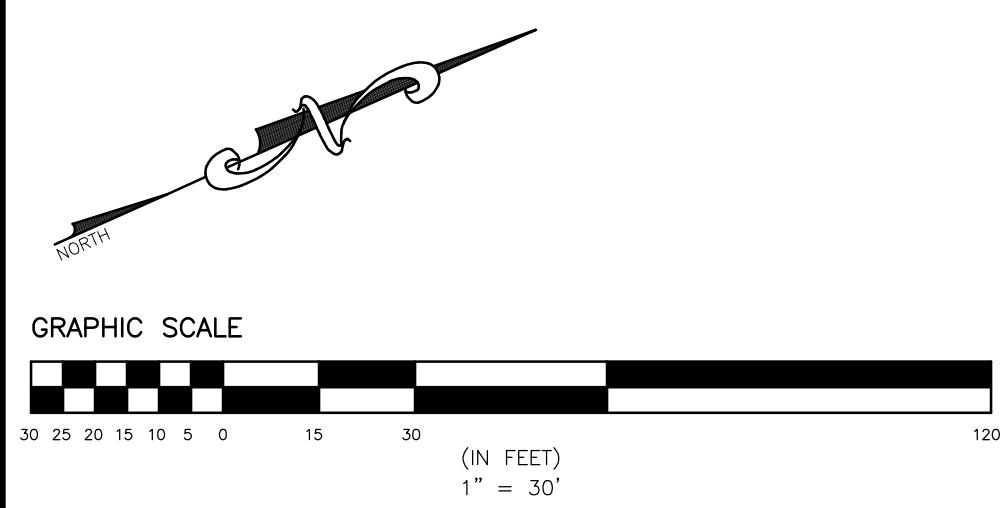
103,500± SF	ASPHALT
29,500± SF	GRAVEL
167,500± SF	LAWN
2,200± SF	CONCRETE

REVISED DRAWING 10/15/2024

REMOVALS AND STAGING PLAN

DRAWING NUMBER:
C-111

Oct 17, 2024 - 7:33 am
C:\workfiles\environmental design\partnership\sharepoint\site - documents\0 - A-Z\ULSTER\Highland\chodikee_road\05-dwg\Detained\SHEETS\C-111.dwg
38x24 PLOT SHEET

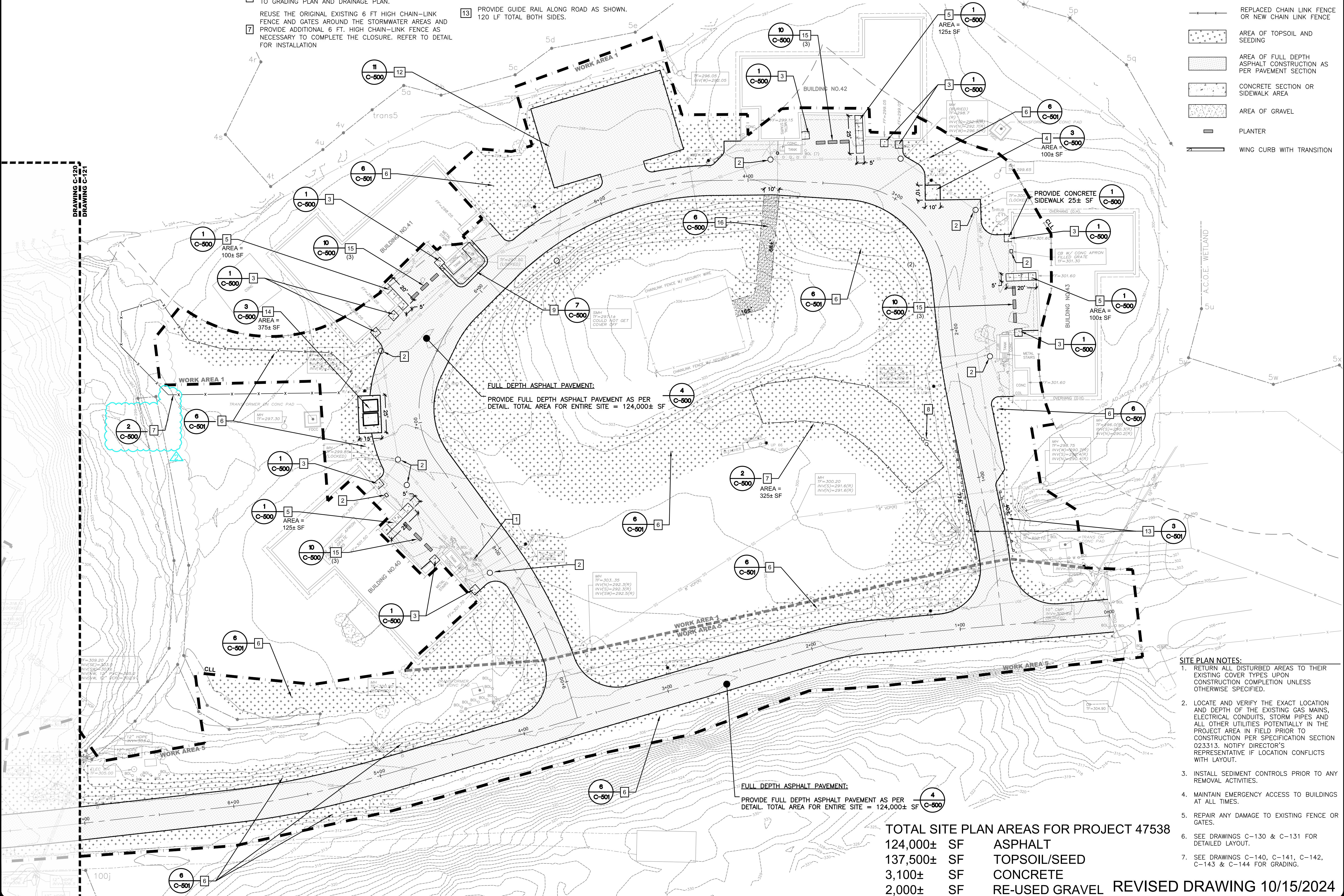


SITE PLAN KEY:

- 1 ADJUST GATE VALVE TO BE FLUSH WITH ASPHALT PAVING (TYP.).
- 2 ADJUST FRAME AND GRATE TO BE FLUSH WITH ASPHALT PAVING.
- 3 PROVIDE 5'x5' CONCRETE PAD CENTERED ON EXISTING EXTERIOR DOOR.
- 4 PROVIDE CONCRETE PAD FOR EXISTING DUMPSTER OR EXISTING SHED AS PER RIGID CONCRETE PAVEMENT SECTION DETAIL.
- 5 PROVIDE CONCRETE SIDEWALK AS PER SIDEWALK DETAIL.
- 6 APPROXIMATE AREA OF TOPSOILING AND SEEDING. REFER TO GRADING PLAN AND DRAINAGE PLAN.
- 7 REUSE THE ORIGINAL EXISTING 6 FT HIGH CHAIN-LINK FENCE AND GATES AROUND THE STORMWATER AREAS AND PROVIDE ADDITIONAL 6 FT. HIGH CHAIN-LINK FENCE AS NECESSARY TO COMPLETE THE CLOSURE. REFER TO DETAIL FOR INSTALLATION
- 8 PLACE THE REUSED 6 FT HIGH CHAIN LINK GATE IN THIS LOCATION OR AS DIRECTED BY THE DIRECTOR'S REPRESENTATIVE.
- 9 PROVIDE ASPHALT WING CURB WITH 3' TAPERS (TRANSITION) ON EITHER END. REFER ALSO TO THE GRADING PLAN AND DRAINAGE PLAN.
- 10 PROVIDE TREE PROTECTION AS PER DETAIL.
- 11 PROVIDE SILT FENCE PROTECTION PER DETAIL.
- 12 PROVIDE FOUNDATION AND INSTALL BACKBOARD FURNISHED BY DIRECTOR'S REPRESENTATIVE AT BOTH ENDS OF PAVEMENT.
- 13 PROVIDE GUIDE RAIL ALONG ROAD AS SHOWN. 120 LF TOTAL BOTH SIDES.
- 14 PROVIDE CONCRETE PAD FOR EXISTING DUMPSTER OR EXISTING SHED AS PER RIGID CONCRETE PAVEMENT SECTION DETAIL.
- 15 PROVIDE PLANTER BOX
- 16 PROVIDE GRAVEL DRIVE AS PER DETAIL TO THE STAGING AREA.

SITE PLAN LEGEND:

- DETAIL REFERENCE
 DRAWING NUMBER
- CONTRACT LIMIT LINE
- TEMPORARY CONSTRUCTION FENCE
- MATCHLINE AND/OR LIMITS OF PAVEMENT/LANDSCAPE AREA
- REPLACED CHAIN LINK FENCE OR NEW CHAIN LINK FENCE
- AREA OF TOPSOIL AND SEEDING
- AREA OF FULL DEPTH ASPHALT CONSTRUCTION AS PER PAVEMENT SECTION
- CONCRETE SECTION OR SIDEWALK AREA
- AREA OF GRAVEL
- PLANTER
- WING CURB WITH TRANSITION



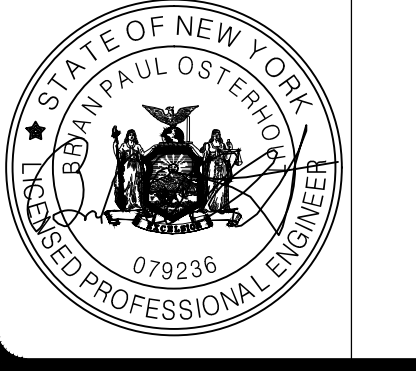
NEW YORK STATE OFFICE OF OPPORTUNITY **Office of General Services**

DESIGN & CONSTRUCTION

CONSULTANT: ENVIRONMENTAL DESIGN PARTNERSHIP, LLP
 CERTIFICATE OF AUTHORIZATION #: 037711

edp ENVIRONMENTAL DESIGN PARTNERSHIP, LLP.
 edp@edp.com

WARNING:
 THE ALTERATION OF THIS MATERIAL IN ANY WAY, UNLESS DONE UNDER THE DIRECTION OF A COMPARABLE PROFESSIONAL, I.E. ARCHITECT FOR AN ARCHITECT, ENGINEER FOR AN ENGINEER OR LANDSCAPE ARCHITECT FOR A LANDSCAPE ARCHITECT, IS A VIOLATION OF THE NEW YORK STATE EDUCATION LAW AND/OR REGULATIONS AND IS A CLASS "A" MISDEMEANOR.



CONTRACT: **CONSTRUCTION**

TITLE: **PROVIDE ASPHALT PAVING AND IMPROVE DRAINAGE**

LOCATION: **HIGHLAND RESIDENTIAL CENTER
 629 N CHODIKEE LAKE ROAD
 HIGHLAND, NEW YORK**

CLIENT: **NEW YORK STATE OFFICE OF CHILDREN AND FAMILY SERVICES**

MARK	DATE	DESCRIPTION
CRW	10/15/2024	ADDENDUM No. 2
BPO	07/16/2024	BID DOCUMENTS

PROJECT NUMBER:	47538 - C
DESIGNED BY:	DBR
DRAWN BY:	DBR
FIELD CHECK:	BPO
APPROVED:	BPO

SHEET TITLE: **SITE PLAN**

DRAWING NUMBER: **C-121**

SHEET 9 OF 21

TOTAL SITE PLAN AREAS FOR PROJECT 47538

124,000± SF	ASPHALT
137,500± SF	TOPSOIL/SEED
3,100± SF	CONCRETE
2,000± SF	RE-USED GRAVEL

REVISED DRAWING 10/15/2024

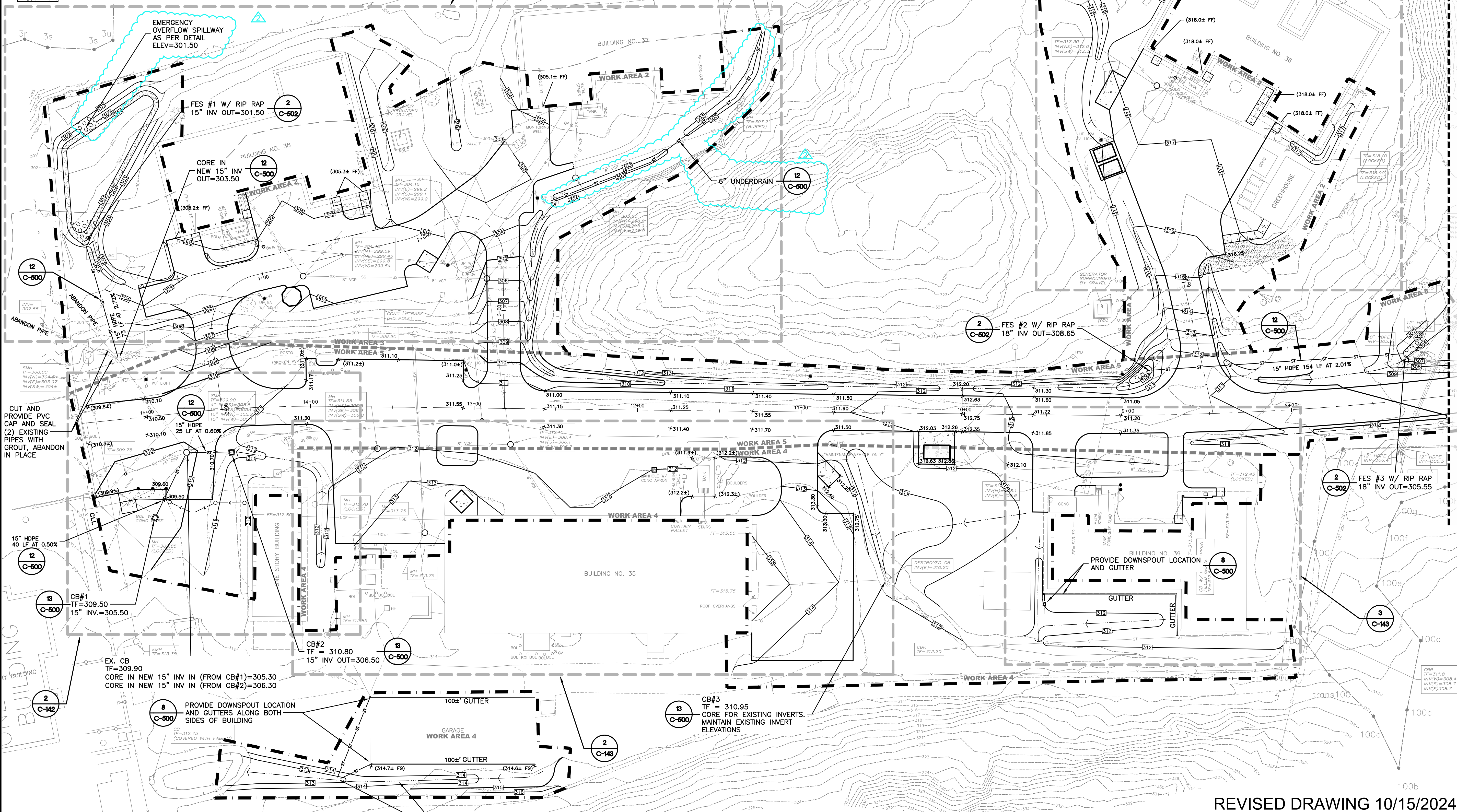
Oct 18, 2024 - 9:27 am
 C:\workfiles\environmental design\partnership\sharepoint\site - documents\0 A-Z\ALSTER\Highland\chodikee_road\05-dwg\Detained\SHEETS\C-121.dwg
 38x24 PLOT SHEET

GRADING AND DRAINAGE PLAN LEGEND:

- 3
C-501
DETAIL NUMBER
- DETAIL REFERENCE
- DRAWING NUMBER
- CLL CONTRACT LIMIT LINE
- MATCHLINE AND/OR LIMITS OF PAVEMENT/LANDSCAPE AREA
- X 156.50 SPOT ELEVATION
- (155.2)± EXISTING SPOT ELEVATION REFERENCE
- MINOR CONTOUR LINE
- MAJOR CONTOUR LINE
- ST STORM PIPE
- FES CB STORM STRUCTURES
- PAVED OR GRASSED SWALE
- AREA OF GRAVEL

GRADING AND DRAINAGE PLAN NOTES:

1. RETURN ALL DISTURBED AREAS TO THEIR EXISTING COVER TYPES UPON CONSTRUCTION COMPLETION UNLESS OTHERWISE SPECIFIED.
2. LOCATE AND VERIFY THE EXACT LOCATION AND DEPTH OF THE EXISTING GAS MAINS, ELECTRICAL CONDUITS, STORM PIPES AND ALL OTHER UTILITIES POTENTIALLY IN THE PROJECT AREA IN FIELD PRIOR TO CONSTRUCTION PER SPECIFICATION SECTION 023313. NOTIFY DIRECTOR'S REPRESENTATIVE IF LOCATION CONFLICTS WITH LAYOUT.
3. INSTALL SEDIMENT CONTROLS PRIOR TO ANY REMOVAL ACTIVITIES.
4. MAINTAIN EMERGENCY ACCESS TO BUILDINGS AT ALL TIMES.
5. REPAIR ANY DAMAGE TO EXISTING FENCE OR GATES.



NEW YORK STATE OF OPPORTUNITY Office of General Services
DESIGN & CONSTRUCTION

CONSULTANT: ENVIRONMENTAL DESIGN PARTNERSHIP, LLP
CERTIFICATE OF AUTHORIZATION #: 037711

edp ENVIRONMENTAL DESIGN PARTNERSHIP, LLP.
edp|ip.com

WARNING:
THE ALTERATION OF THIS MATERIAL IN ANY WAY, UNLESS DONE UNDER THE DIRECTION OF A COMPARABLE PROFESSIONAL, I.E. ARCHITECT FOR AN ARCHITECT, ENGINEER FOR AN ENGINEER OR LANDSCAPE ARCHITECT FOR A LANDSCAPE ARCHITECT, IS A VIOLATION OF THE NEW YORK STATE EDUCATION LAW AND/OR REGULATIONS AND IS A CLASS "A" MISDEMEANOR.

STATE OF NEW YORK
PAUL OSTERPOL
079236
LICENSED PROFESSIONAL ENGINEER

CONTRACT: **CONSTRUCTION**

TITLE: **PROVIDE ASPHALT PAVING AND IMPROVE DRAINAGE**

LOCATION: **HIGHLAND RESIDENTIAL CENTER
629 N CHODIKEE LAKE ROAD
HIGHLAND, NEW YORK**

CLIENT: **NEW YORK STATE OFFICE OF CHILDREN AND FAMILY SERVICES**

CRW	10/15/2024	ADDENDUM No. 2
BPO	07/16/2024	BID DOCUMENTS
MARK	DATE	DESCRIPTION
PROJECT NUMBER:	47538 - C	
DESIGNED BY:	DBR	
DRAWN BY:	DBR	
FIELD CHECK:	BPO	
APPROVED:	BPO	
SHEET TITLE:	GRADING AND DRAINAGE PLAN	
DRAWING NUMBER:	C-140	
SHEET	12	OF 21

REVISED DRAWING 10/15/2024

GRAPHIC SCALE
1" = 30'

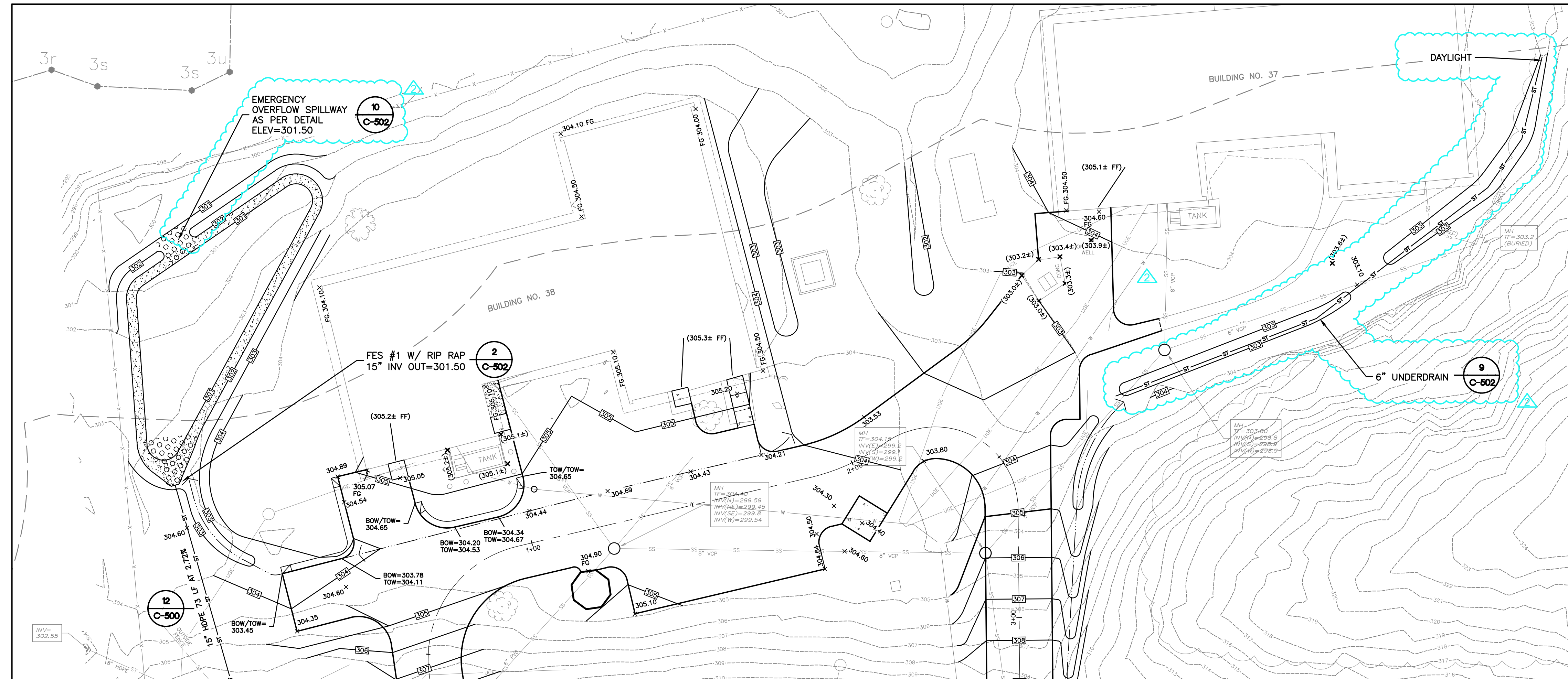
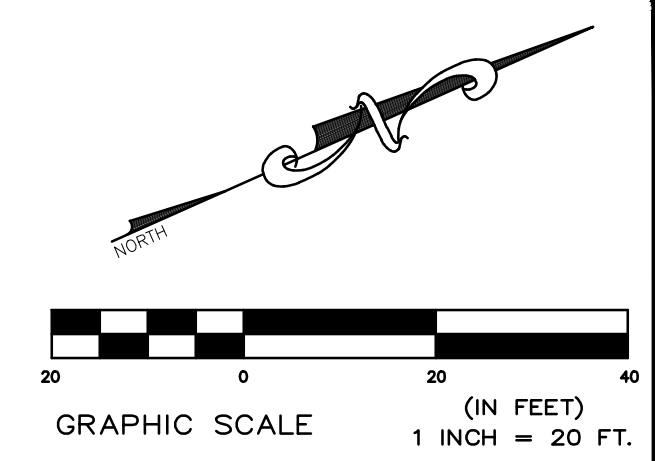
Oct. 17, 2024 - 2:23pm
 C:\WORKFILES\Environmental Design Partnership\SharePoint Site - Documents\0 A-Z\ULSTER\Highland\N. Chodikee Road\05-dwg\Detailed\Sheets\C-140.dwg
 38x24 PLOT SHEET

BUILDINGS 35, 37-39 DETAILED GRADING PLAN LEGEND:

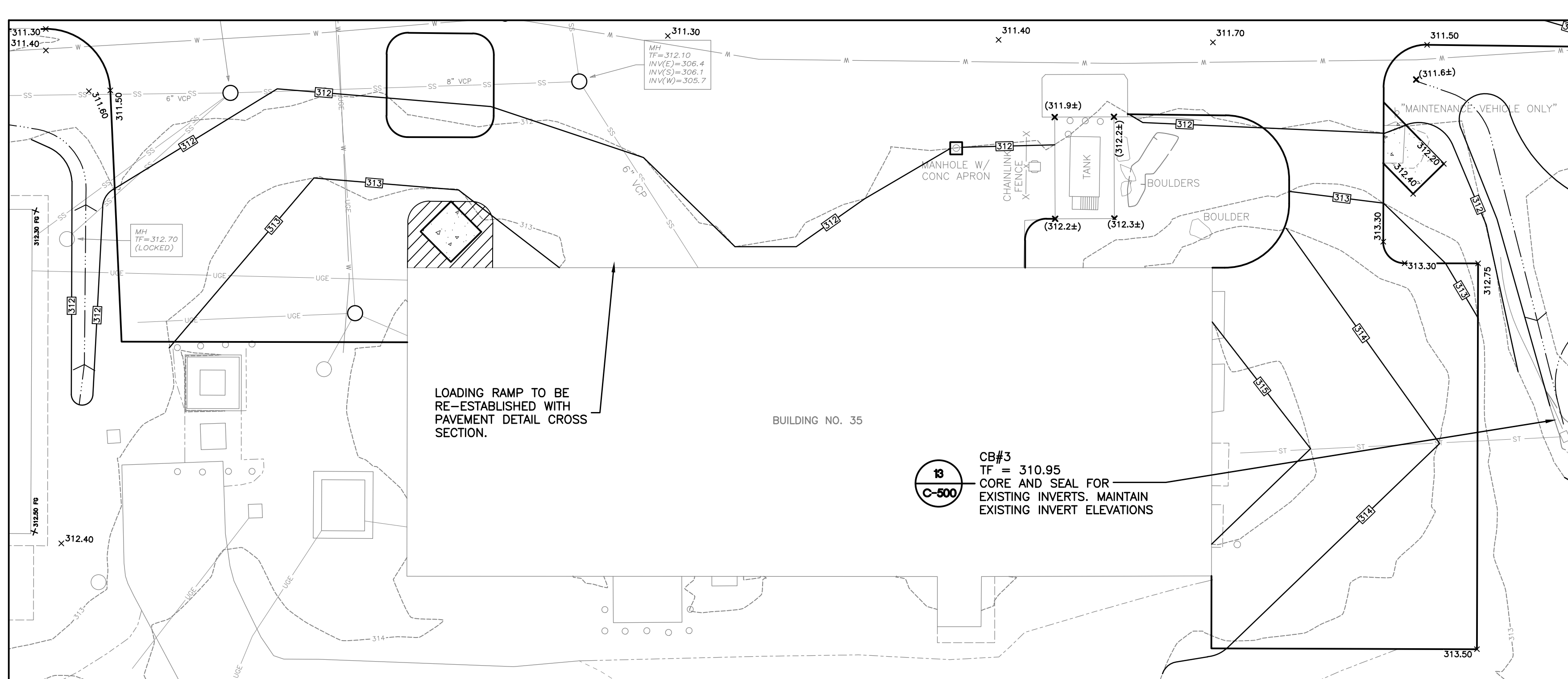
- 3 C-501 DETAIL NUMBER
- 3 C-501 DETAIL REFERENCE
- 3 C-501 DRAWING NUMBER
- CLL CONTRACT LIMIT LINE
- - - MATCHLINE AND/OR LIMITS OF PAVEMENT/LANDSCAPE AREA
- × 156.50 SPOT ELEVATION
- (155.2)± EXISTING SPOT ELEVATION REFERENCE
- 450 MINOR CONTOUR LINE
- 400 MAJOR CONTOUR LINE
- ST STORM PIPE
- FES CB STORM STRUCTURES
- PAVED OR GRASSED SWALE
- ▨ AREA OF GRAVEL

BUILDINGS 35, 37-39 DETAILED GRADING PLAN NOTES:

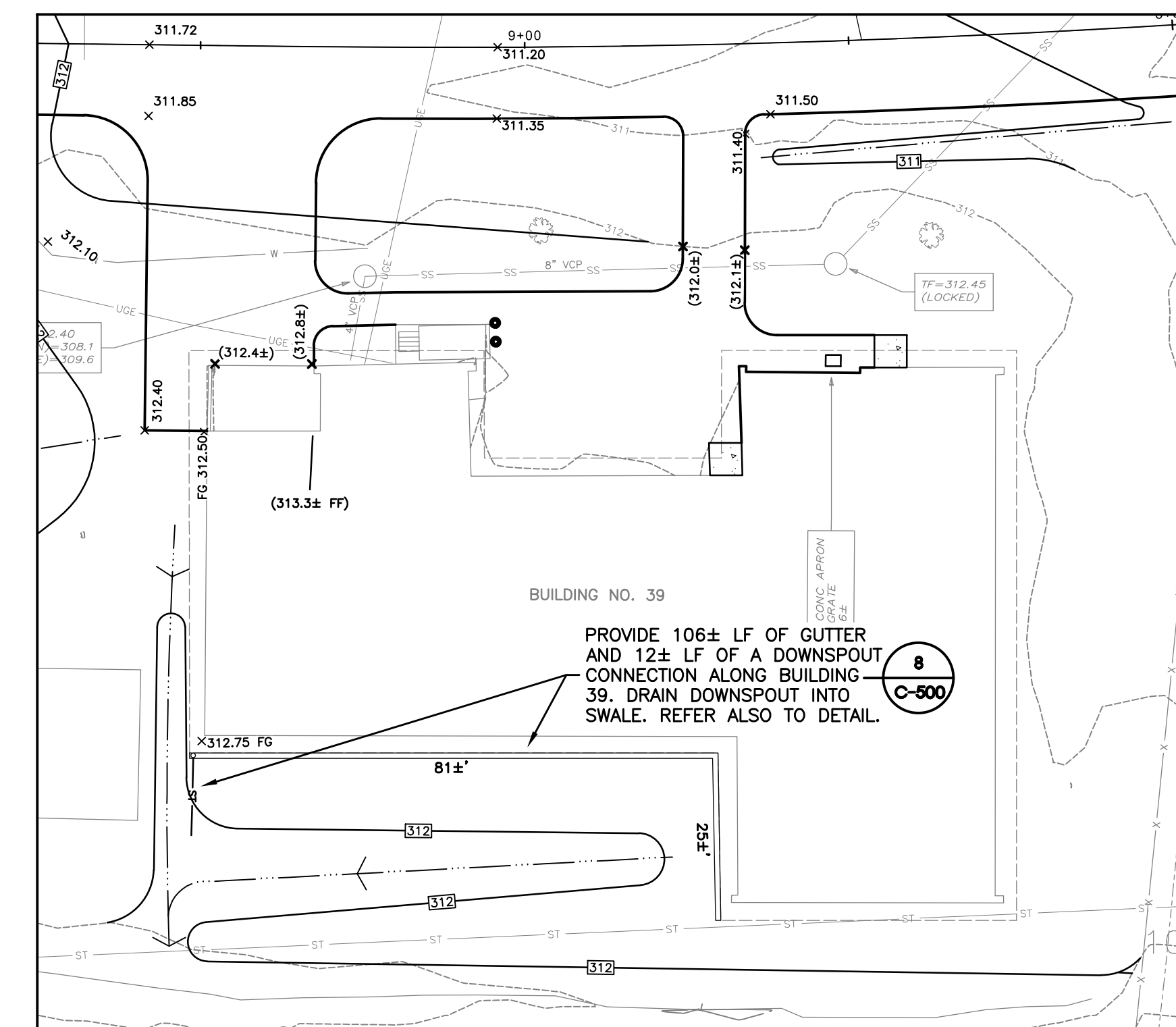
1. RETURN ALL DISTURBED AREAS TO THEIR EXISTING COVER TYPES UPON CONSTRUCTION COMPLETION UNLESS OTHERWISE SPECIFIED.
2. LOCATE AND VERIFY THE EXACT LOCATION AND DEPTH OF THE EXISTING GAS MAINS, ELECTRICAL CONDUITS, STORM PIPES AND ALL OTHER UTILITIES POTENTIALLY IN THE PROJECT AREA IN FIELD PRIOR TO CONSTRUCTION PER SPECIFICATION SECTION 023313. NOTIFY DIRECTOR'S REPRESENTATIVE IF LOCATION CONFLICTS WITH LAYOUT.
3. INSTALL SEDIMENT CONTROLS PRIOR TO ANY REMOVAL ACTIVITIES.
4. MAINTAIN EMERGENCY ACCESS TO BUILDINGS AT ALL TIMES.
5. REPAIR ANY DAMAGE TO EXISTING FENCE OR GATES.



1 BUILDINGS 37 & 38 GRADING AND DRAINAGE PLAN
SCALE: 1" = 20'



2 BUILDING 35 GRADING AND DRAINAGE PLAN
SCALE: 1" = 20'



3 BUILDING 39 GRADING AND DRAINAGE PLAN
SCALE: 1" = 20'

REVISED DRAWING 10/15/2024

DESIGN & CONSTRUCTION

CONSULTANT: ENVIRONMENTAL DESIGN PARTNERSHIP, LLP
CERTIFICATE OF AUTHORIZATION #: 037711



CERTIFICATE OF AUTHORIZATION #: 0018610

WARNING:
THE ALTERATION OF THIS MATERIAL IN ANY WAY, UNLESS DONE UNDER THE DIRECTION OF A COMPARABLE PROFESSIONAL, I.E. ARCHITECT FOR AN ARCHITECT, ENGINEER FOR AN ENGINEER OR LANDSCAPE ARCHITECT FOR A LANDSCAPE ARCHITECT, IS A VIOLATION OF THE NEW YORK STATE EDUCATION LAW AND/OR REGULATIONS AND IS A CLASS "A" MISDEMEANOR.



CONTRACT: **CONSTRUCTION**
TITLE: **PROVIDE ASPHALT PAVING AND IMPROVE DRAINAGE**
LOCATION: **HIGHLAND RESIDENTIAL CENTER
629 N CHODIKEE LAKE ROAD
HIGHLAND, NEW YORK**
CLIENT: **NEW YORK STATE OFFICE OF
CHILDREN AND FAMILY SERVICES**

CRW	10/15/2024	ADDENDUM No. 2
BPO	07/16/2024	BID DOCUMENTS
MARK	DATE	DESCRIPTION
PROJECT NUMBER:	47538 - C	
DESIGNED BY:	DBR	
DRAWN BY:	DBR	
FIELD CHECK:	BPO	
APPROVED:	BPO	
SHEET TITLE:	BUILDINGS 35, 37-39 DETAILED GRADING PLAN	
DRAWING NUMBER:	C-143	

Oct 17, 2024 - 3:36pm
 C:\workfiles\environmental design partnership\sharepoint site - documents\0 A-Z\ALSTER\Highland\chodikee road\05-dwg\Detailed\SHEETS\C-143.dwg
 38x24 PLOT SHEET

